

SUBMITTAL DATA: PKA-A36KA4 & PUY-A36NHA436,000 BTU/H WALL-MOUNTED AIR-CONDITIONING SYSTEM

Job Name:	Location:	Date:
Purchaser:	Engineer:	
Submitted to:	For <input type="checkbox"/> Reference <input type="checkbox"/> Approval <input type="checkbox"/> Construction	
Unit Designation:	Schedule No.:	

GENERAL FEATURES

- Wall-mounted indoor unit for residential and commercial applications
- Setback down to 50°F when used with MRCH1 Central Controller
- Shiny-white—exterior plastic; compact design
- Quiet operation—both indoor and outdoor units
- Self-check function—integrated diagnostics
- Limited warranty: five years on parts and defects and seven years on compressors

OPTIONAL ACCESSORIES
Indoor Unit

- Mini Condensate Pump (SI1730-230, 230V)
- L-Connector Pipe (PAC-SC84PI; for left side unit piping installation)

Outdoor Unit

- Drain Pan (PAC-SG63DP)
- Drain Socket (PAC-SG61DS)
- Three-pole Disconnect Switch (TAZ-MS303)
- Wind Baffle (WB-PA2)
- Air Outlet Guide (PAC-SG59SG)
- Mounting Base (DSD-400N)
- Mounting Pad (ULTRILITE2)
- Wall-mounting Brackets (CWMB1)

Controller Options

- Wireless Remote Controller Kit (MHK1) with Wall-mounted Central Controller (MRCH1), Wireless Receiver (MIFH1), and cable*
- Wall-mounted Central Controller (MRCH1)*
- Wireless Receiver (MIFH1)*
- Portable Central Controller (MCCH1; for use with Wireless Remote Controller Kit MHK1)*
- Outdoor Air Sensor (MOS1; for use with Central Controller (MRCH1), Wireless Remote Controller Kit (MHK1) and Portable Central Controller (MCCH1)*

*See Submittal for information on each option.

- Wall-mounted Wired Remote Controller (PAR-21MAA)
- M-NET Adapter (PAC-SF81MA)
- CN51 Connector for Multiple Remote Controller Adapters/Duct Fan Controller (PAC-725AD)
- CN32 Connector for Remote On/Off (PAC-715AD)
- Remote Temperature Sensor (PAC-SE41TS)
- Remote Operation Adapter - Display and On/Off (PAC-SF40RM)
- Handheld Wireless Remote Controller (PAR-SL97A)
- Lockdown Bracket for Handheld Controller (RCMKP1CB)
- Control/Service Tool (PAC-SK52ST)

Cooling*

Rated Capacity	34,200 Btu/h
Minimum Capacity	12,000 Btu/h
SEER	14.0 Btu/h/W
EER	6.8 Btu/h/W
Total Input	5,030 W

* Rating Conditions (Cooling) - Indoor: 80°F (22°C) DB / 67°F (19°C) WB.
 Outdoor: 95°F (35°C) DB / 75°F (24°C) WB.

Electrical Requirements

Power Supply 208 / 230V, 1-Phase, 60 Hz
 Recommended Fuse/Breaker Size 30 A

Voltage

Indoor - Outdoor S1-S2 AC 208 / 230V
 Indoor - Outdoor S2-S3 DC 24V

OPERATING CONDITIONS

		Indoor Intake Air Temp.		Outdoor Intake Air Temp.
Cooling	Maximum	95°F (35°C) DB, 71°F (22°C) WB		115°F (46°C) DB
	Minimum	67°F (19°C) DB, 57°F (14°C) WB		0°F** (-18°C) DB

** With optional wind baffle accessory installed. If not installed, the minimum temperature will be 23°F (-5°C) DB.



Indoor Unit: PKA-A36KA4



Outdoor Unit: PUY-A36NHA4

Indoor Unit

MCA	1 A
Fan Motor	0.57 F.L.A.
Fan Motor Output56 W
Airflow (Lo - Mid - Hi)	705 - 810 - 920 Dry CFM
	635 - 730 - 830 Wet CFM
Air Filter	Polypropylene Honeycomb
Sound Pressure Level (Lo - Mid - Hi)43 - 46 - 49 dB(A)
SHF	0.70
Moisture Removal	9.2 pt./h

DIMENSIONS	UNIT INCHES / MM
W	46-1/16 / 1,170
D	11-5/8 / 295
H	14-3/8 / 365

Weight 46 lbs. / 21 kg
 External Finish Munsell No. 1.0Y 9.2 / 0.2
 Field Drainpipe Size O.D. 5/8" / 16 mm

Outdoor Unit

Compressor	DC Inverter-driven Twin Rotary
MCA	25 A
MOCP	40 A
Fan Motor	0.75 F.L.A.
Sound Pressure Level	
Cooling48 dB(A)

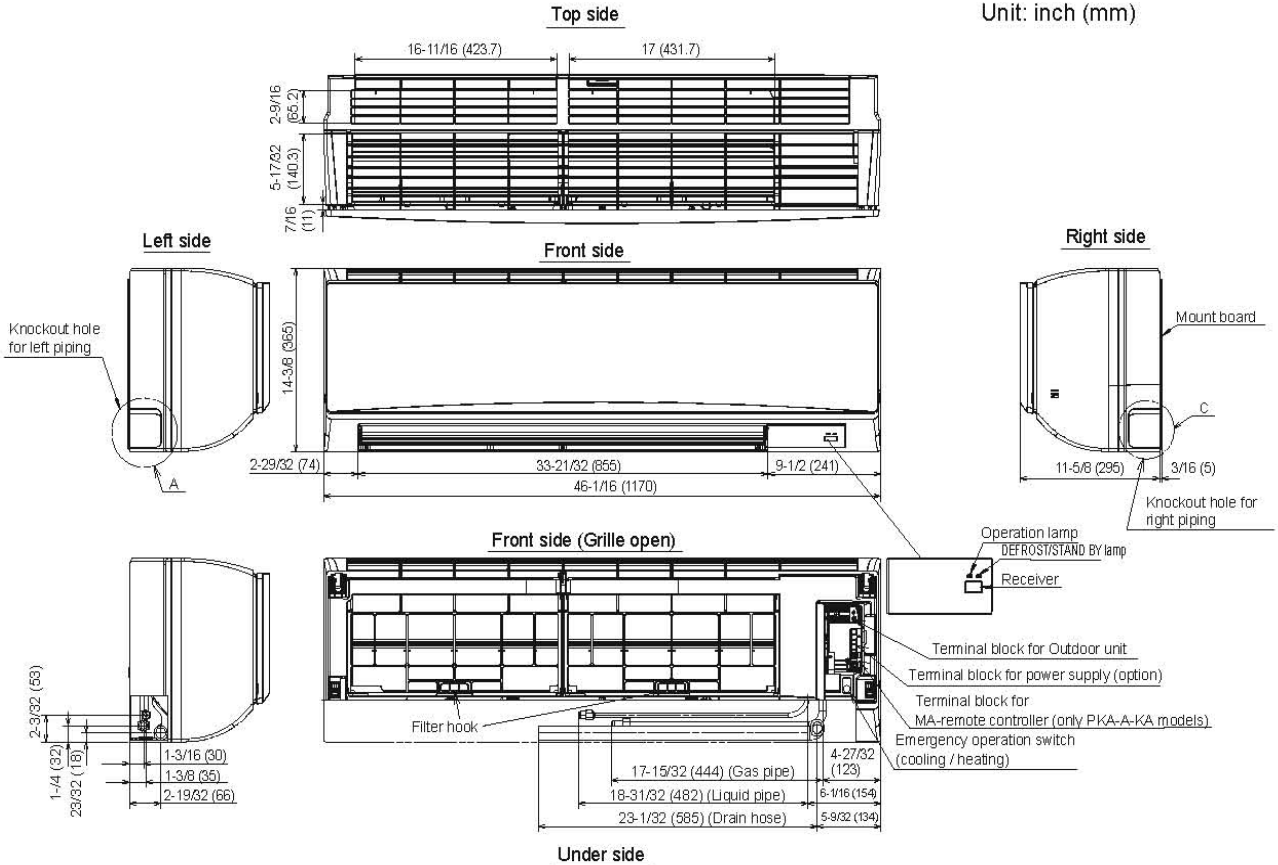
DIMENSIONS	INCHES / MM
W	37-3/8 / 950
D	13 + 1-3/16 / 330 + 30
H	37-1/8 / 943

Weight 163 lbs. / 74 kg
 External Finish Munsell No. 3Y 7.8 / 1.1
 Refrigerant Type R410A
 Refrigerant Pipe Size O.D.
 Gas Side 5/8" / 15.88 mm
 Liquid Side 3/8" / 9.52 mm
 Max. Refrigerant Pipe Length 165' / 50 m
 Max. Refrigerant Pipe Height Difference 100' / 30 m
 Connection Method Flared



DIMENSIONS: PKA-A36KA4

Unit: inch (mm)

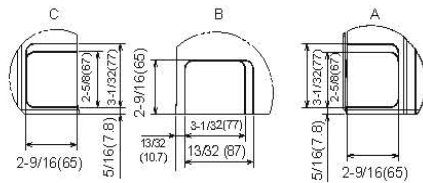


Sleeve (Field supplied)	Through hole
$\phi 2-15/16$ ($\phi 75$)	$\phi 2-15/16 \sim \phi 3-5/32$ $\phi 75 \sim \phi 80$

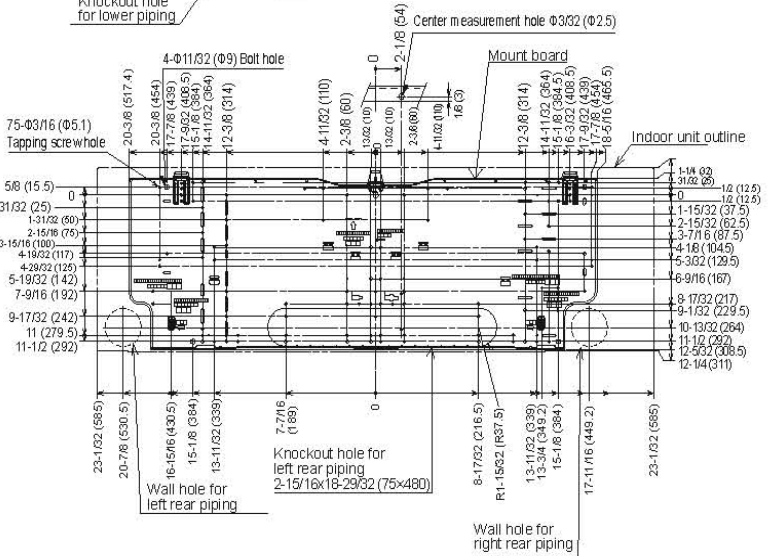
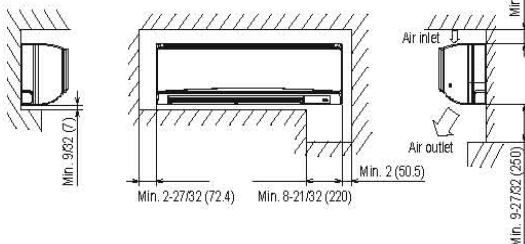
Piping connection

① Liquid pipe	Refrigerant pipe: 3/8 O.D. ($\phi 9.52$) Flared connection: 3/8F
② Gas pipe	Refrigerant pipe: 5/8 O.D. ($\phi 15.88$) Flared connection: 5/8F
③ Drain hose	5/8 ($\phi 16$) O.D.

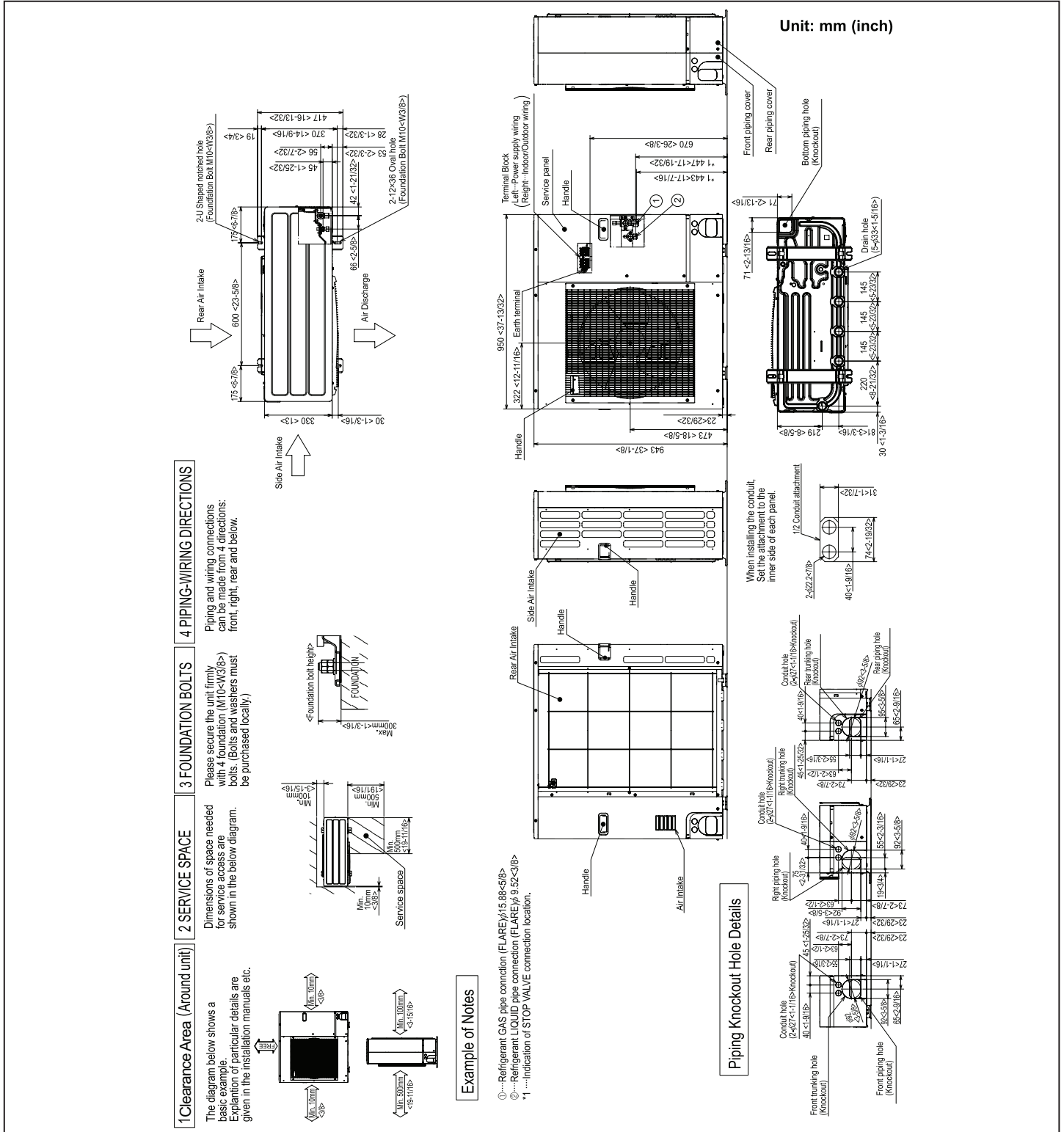
Knockout hole for piping



Required space (Indoor unit)



DIMENSIONS: PUY-A36NHA4



HVAC Advanced Products Division
 3400 Lawrenceville Suwanee Rd
 Suwanee, GA 30024
 Tele: 678-376-2900 • Fax: 800-889-9904
 Toll Free: 800-433-4822 (#3)
 www.mehvac.com
Specifications are subject to change without notice.