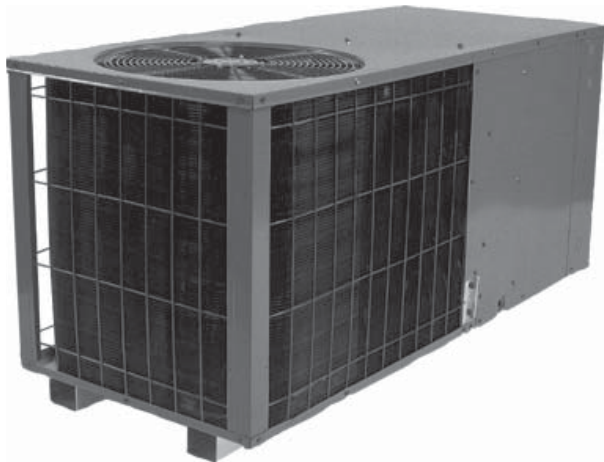




Air Conditioning & Heating



2 to 5 Ton



PRODUCT SPECIFICATIONS

PHKJ SERIES

12 SEER

PACKAGED HEAT PUMP

**Cooling Capacity:
23,000 - 52,600 BTU/h**

**Heating Capacity:
22,000 - 54,000 BTU/h**



Standard Features

- Hermetically sealed, high-efficiency compressor with internal relief valve
- Two-speed evaporator blower motor; low speed for normal or low-static application/high-speed for high-static application in manufactured homes
- Totally enclosed, permanently lubricated condenser fan motor
- Copper tube/aluminum fin coils
- Fully charged R-22 system
- Bi-flow liquid line filter dryer
- Quiet-operating top condenser discharge
- Bottom pan rails elevate the unit above slab
- Crankcase heater
- Suction line accumulator
- Check-flowrater expansion device
- Approved for placement in manufactured homes
- ARI Certified; ETL Certified

Cabinet Features

- Powder-paint finish with 500-hour salt spray approval
- Fully insulated air-handling compartment
- Convenient access panels
- When properly anchored, meets the 2001 Florida Building Code unit integrity requirements for hurricane-type winds

Accessories

- Roof Curb
- Downflow Plenum (includes filter rack)
- Manual Fresh Air Damper (to be used with Downflow Plenum)
- Economizer (to be used with Downflow Plenum)
- Louvered Panel Kit
- Square-to-Round Duct Converter for Round Duct applications (horizontal and downflow)
- Elbow and Flashing Downflow Kit
- Room Thermostat
- Outdoor Thermostat; required for all heat pumps if outdoor ambient temperature is 0°F with 50% or higher relative humidity
- Outdoor Lock-out Thermostat/Emergency Heat Relay Kit for staging electric heat
- Heat Kit from 5-20 kW with plug-in connection

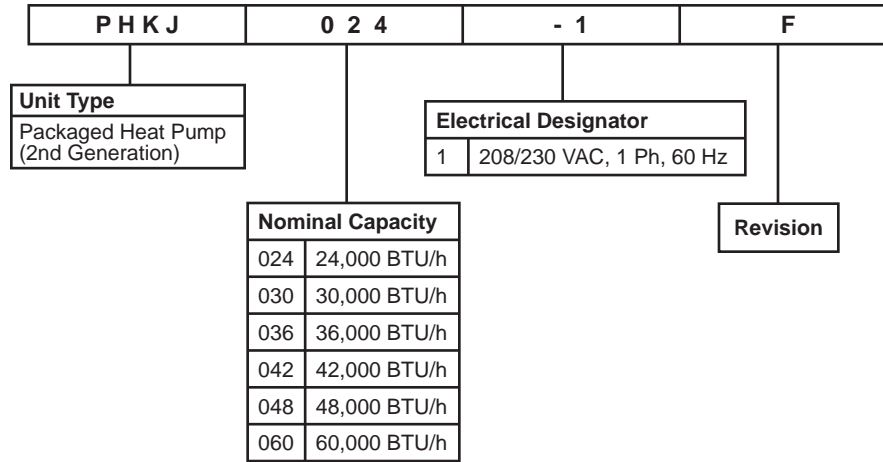
Accessory Heat Kit Features

- Controlled by sequencers for better temperature control (single-phase units only)
- Control circuitry arranged to readily permit staging (HK10, 15, 20-1 only)
- Primary/secondary limit protection
- Rust-resistant nickel chromium heating elements
- Factory-installed circuit breakers certain models



PRODUCT SPECIFICATIONS

NOMENCLATURE



SPECIFICATIONS

	PHKJ024-1F	PHKJ030-1F	PHKJ036-1F	PHKJ042-1F	PHKJ048-1F	PHKJ060-1F
Total Cooling (BTU/h)	23,000	29,000	36,000	40,000	47,000	52,500
Sens. Cooling (BTU/h)	17,400	22,400	27,000	30,000	35,200	39,600
SEER ¹	12.0	12.0	12.0	12.0	12.0	11.0
EER _s ²	11.0	11.0	11.0	11.0	11.0	10.0
Heating-BTU/h (47°F)	22,000	27,600	33,000	36,200	43,000	54,000
C.O.P. (47°F)	3.30	3.30	3.40	3.50	3.40	3.40
Heating-BTU/h (17°F)	11,000	14,000	17,700	22,000	23,600	30,600
C.O.P. (17°F)	1.90	2.10	2.00	2.10	2.10	2.20
H.S.P.F.	7.40	7.00	7.50	7.50	7.50	7.50
Sound Rating (bels)	8.40	8.40	8.40	8.40	8.40	8.40
Indoor Blower						
Type	DD	DD	DD	DD	DD	DD
Size (D" x W")	9 x 6	9 X 6	9 X 8	9 X 8	9 X 8	10 X 8
Motor Horsepower	1/5	1/3	1/3	1/3	1/2	3/4
Evaporator Coil						
Face Area (ft ²)	5.25	5.25	6.22	6.22	6.22	6.22
Fins per inch	14	14	14	14	14	14
No. of Rows	3	3	3	4	4	4
Outdoor Fan						
Fan Diameter	22"	22"	22"	22"	22"	22"
Motor Horsepower	1/4	1/4	1/4	1/4	1/3	1/3
Condenser Coil						
Face Area (ft ²)	14.7	14.7	16.2	16.2	17.4	17.4
Fins per inch	19	19	19	19	19	19
No. of Rows	1	1	1	1	1	2
Electrical						
Ph	1	1	1	1	1	1
Volts	208/230	208/230	208/230	208/230	208/230	208/230
Compressor RLA	9.8	13.5	14.1	16.6	19.4	19.9
Compressor LRA	56.0	72.5	79.0	95.0	109.0	137.0
Indoor Blower FLA	1.5	2.6	2.6	2.6	3.6	5.1
Outdoor Blower FLA	0.9	0.9	1.6	1.6	2.5	2.5
Minimum Circuit Ampacity	14.7	20.4	21.8	24.8	30.4	32.5
Maximum Overcurrent Protection	20	30	30	40	50	50
Net Weight (pounds)	325	330	340	365	385	400
Shipping Weight (pounds)	350	355	365	390	410	425

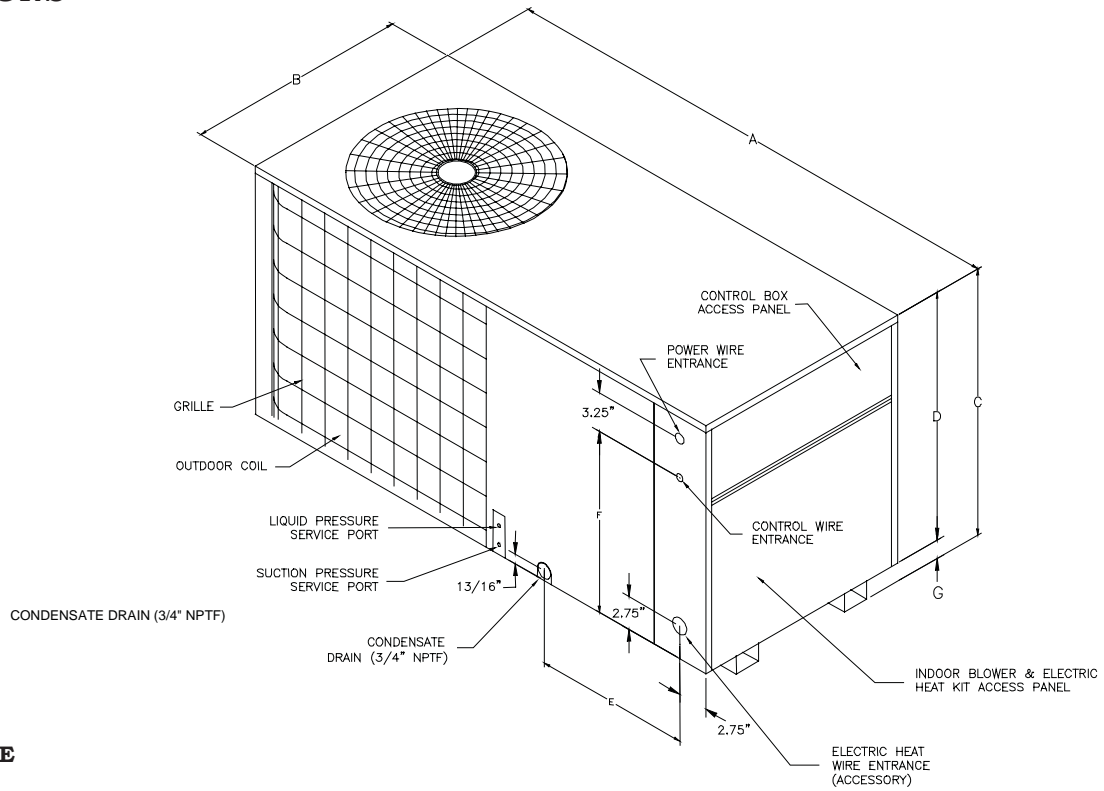
(1) Certified per ARI 240

(2) BTU/Watt 80/70°F inside air - 95°F outside air

(3) M.O.P. (Maximum Overcurrent Protection)

Note - May use fuses or HACR type Circuit Breakers of the same size as noted

DIMENSIONS

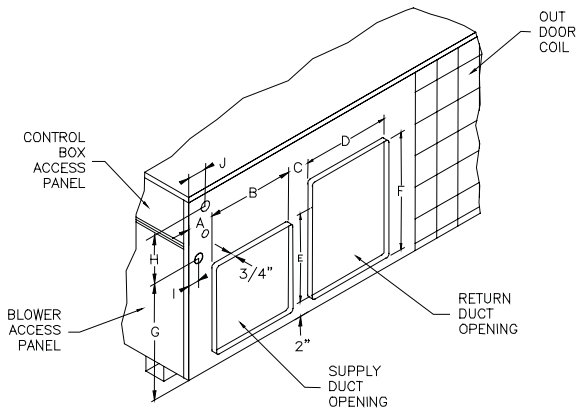


CHASSIS SIZE

Model	Med.	Large
PHKJ024-1F	X	
PHKJ030-1F	X	
PHKJ036-1F		X
PHKJ042-1F		X
PHKJ048-1F		X
PHKJ060-1F		X

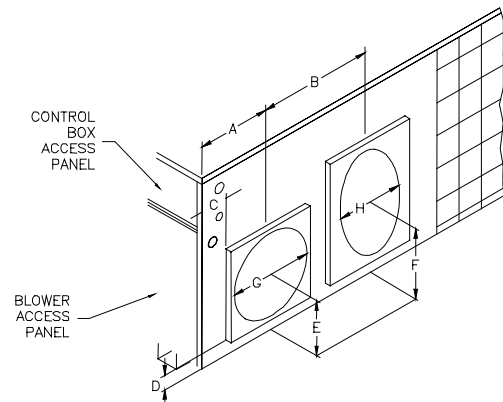
Chassis	A	B	C	D	E	F	G
Large	63.15"	32.15"	34.62"	32.50"	19.56"	27.06"	2.12"
Medium	63.15"	32.15"	29.62"	27.50"	19.56"	22.06"	2.12"
Small	56.35"	24.14"	27.12"	25.00"	16.68"	19.56"	2.12"

UNIT WITH REGULAR DUCT PANEL



Chassis	A	B	C	D	E	F	G	H	I	J
Small	3.75"	12"	4.25"	12"	12"	20"	16.18"	6.62"	2.59"	2.59"
Medium	3.75"	14"	6.25"	14"	14"	22"	18.68"	6.62"	2.25"	2.75"
Large	3.75"	14"	6.25"	14"	14"	24"	18.68"	11.62"	2.25"	2.75"

UNIT WITH CIRCULAR DUCT PANEL ADDED



Chassis	A	B	C	D	E	F	G	H*
Small	9.62"	16.24"	3.62"	2"	8"	12"	12"	14"
Medium	10.75"	20.25"	3.75"	2"	9"	13"	14"	16"
Large	10.75"	20.25"	3.75"	2"	9"	15"	14"	18"

* Return opening is equivalent to round duct stated

PRODUCT SPECIFICATIONS

EXPANDED RATINGS—COOLING

PHKJ024-1F

INDOOR AIR		CONDENSER AIR TEMPERATURE														
SCFM	WB	75F			85F			95F			105F			115F		
		TOTAL MBTU/h	SENS MBTU/h	WATTS KWH	TOTAL MBTU/h	SENS MBTU/h	WATTS KWH	TOTAL MBTU/h	SENS MBTU/h	WATTS KWH	TOTAL MBTU/h	SENS MBTU/h	WATTS KWH	TOTAL MBTU/h	SENS MBTU/h	WATTS KWH
652	72	26.7	13.1	1.97	25.5	12.5	2.07	24.2	12.0	2.15	22.8	11.5	2.26	21.4	11.0	2.36
	67	24.4	16.2	1.84	23.2	15.7	1.92	22.1	15.1	2.03	20.7	14.6	2.13	19.3	14.6	2.24
	62	22.5	19.1	1.71	21.4	18.6	1.82	20.8	18.1	1.92	20.2	17.6	2.03	19.1	16.9	2.11
	57	21.6	20.7	1.67	20.7	19.8	1.78	19.8	19.0	1.88	18.6	17.9	2.01	17.7	16.9	2.09
767	72	27.8	14.4	2.03	26.5	13.9	2.11	25.1	13.4	2.22	23.7	13.1	2.32	22.1	12.4	2.43
	67	25.5	18.4	1.90	24.4	17.9	1.99	23.0	17.4	2.09	21.6	16.9	2.20	20.2	16.4	2.30
	62	23.7	22.1	1.80	22.5	21.4	1.88	21.4	20.5	1.99	20.5	19.5	2.09	19.3	18.4	2.22
	57	23.5	22.4	1.78	22.3	21.6	1.88	21.4	20.5	1.99	20.5	19.5	2.09	19.3	18.4	2.22
882	72	28.5	15.7	2.07	27.1	15.1	2.15	25.8	14.6	2.26	24.2	14.1	2.36	22.8	13.7	2.47
	67	26.5	20.4	1.94	25.1	20.0	2.03	23.7	19.5	2.13	22.3	18.8	2.24	20.9	18.3	2.34
	62	24.8	23.8	1.86	23.9	22.8	1.97	22.5	21.8	2.07	21.6	20.7	2.17	20.2	19.5	2.30
	57	24.8	23.8	1.86	23.9	22.8	1.97	22.5	21.8	2.07	21.6	20.7	2.17	20.2	19.5	2.30

Sensible heat capacities shown are based on 80F DB entering air at the evaporator coil.

For sensible heat capacities at other than 80F DB, deduct 84 BTU/h per 100 CFM of evaporator coil air for each degree below 80F, or add 84 BTU/h per 100 CFM of evaporator coil air per degree above 80F.

CAPACITIES AT 95F OUTDOOR., 75F DB AND 63F WB INDOOR:

TOTAL MBTU/h 21.7 SENSIBLE MBTU/h 16.7 LATENT MBTU/h 5.0

PHKJ030-1F

INDOOR AIR		CONDENSER AIR TEMPERATURE														
SCFM	WB	75F			85F			95F			105F			115F		
		TOTAL MBTU/h	SENS MBTU/h	WATTS KWH	TOTAL MBTU/h	SENS MBTU/h	WATTS KWH	TOTAL MBTU/h	SENS MBTU/h	WATTS KWH	TOTAL MBTU/h	SENS MBTU/h	WATTS KWH	TOTAL MBTU/h	SENS MBTU/h	WATTS KWH
822	72	33.6	16.8	2.48	32.2	16.1	2.61	30.5	15.5	2.72	28.7	14.8	2.85	27.0	14.1	2.98
	67	30.7	20.8	2.32	29.3	20.2	2.43	27.8	19.5	2.56	26.1	18.8	2.69	24.4	18.8	2.82
	62	28.4	24.6	2.16	27.0	24.0	2.29	26.2	23.3	2.43	25.5	22.6	2.56	24.1	21.7	2.66
	57	27.3	26.7	2.11	26.1	25.5	2.24	24.9	24.4	2.37	23.5	23.1	2.53	22.3	21.7	2.64
967	72	35.1	18.6	2.56	33.4	17.9	2.66	31.6	17.2	2.79	29.9	16.8	2.93	27.8	15.9	3.06
	67	32.2	23.7	2.40	30.7	23.1	2.50	29.0	22.4	2.64	27.3	21.7	2.77	25.5	21.1	2.90
	62	29.9	28.4	2.27	28.4	27.6	2.37	27.0	26.4	2.50	25.8	25.1	2.64	24.4	23.7	2.79
	57	29.6	28.9	2.24	28.1	27.8	2.37	27.0	26.4	2.50	25.8	25.1	2.64	24.4	23.7	2.79
1112	72	36.0	20.2	2.61	34.2	19.5	2.72	32.5	18.8	2.85	30.5	18.1	2.98	28.7	17.7	3.11
	67	33.4	26.2	2.45	31.6	25.8	2.56	29.9	25.1	2.69	28.1	24.2	2.82	26.4	23.5	2.95
	62	31.3	30.7	2.35	30.2	29.3	2.48	28.4	28.0	2.61	27.3	26.7	2.74	25.5	25.1	2.90
	57	31.3	30.7	2.35	30.2	29.3	2.48	28.4	28.0	2.61	27.3	26.7	2.74	25.5	25.1	2.90

Sensible heat capacities shown are based on 80F DB entering air at the evaporator coil.

For sensible heat capacities at other than 80F DB, deduct 84 BTU/h per 100 CFM of evaporator coil air for each degree below 80F, or add 84 BTU/h per 100 CFM of evaporator coil air per degree above 80F.

CAPACITIES AT 95F OUTDOOR., 75F DB AND 63F WB INDOOR:

TOTAL MBTU/h 27.4 SENSIBLE MBTU/h 21.6 LATENT MBTU/h 5.8

PHKJ036-1F

INDOOR AIR		CONDENSER AIR TEMPERATURE														
SCFM	WB	75F			85F			95F			105F			115F		
		TOTAL MBTU/h	SENS MBTU/h	WATTS KWH	TOTAL MBTU/h	SENS MBTU/h	WATTS KWH	TOTAL MBTU/h	SENS MBTU/h	WATTS KWH	TOTAL MBTU/h	SENS MBTU/h	WATTS KWH	TOTAL MBTU/h	SENS MBTU/h	WATTS KWH
1020	72	41.8	20.3	3.08	40.0	19.4	3.24	37.8	18.6	3.37	35.6	17.8	3.53	33.5	17.0	3.70
	67	38.2	25.1	2.88	36.4	24.3	3.01	34.6	23.5	3.17	32.4	22.7	3.34	30.2	22.7	3.50
	62	35.3	29.7	2.68	33.5	28.9	2.85	32.6	28.1	3.01	31.7	27.3	3.17	29.9	26.2	3.31
	57	33.8	32.1	2.62	32.4	30.8	2.78	31.0	29.4	2.95	29.2	27.8	3.14	27.7	26.2	3.27
1200	72	43.6	22.4	3.17	41.4	21.6	3.31	39.2	20.8	3.47	37.1	20.3	3.63	34.6	19.2	3.80
	67	40.0	28.6	2.98	38.2	27.8	3.11	36.0	27.0	3.27	33.8	26.2	3.44	31.7	25.4	3.60
	62	37.1	34.3	2.81	35.3	33.2	2.95	33.5	31.9	3.11	32.0	30.2	3.27	30.2	28.6	3.47
	57	36.7	34.8	2.78	34.9	33.5	2.95	33.5	31.9	3.11	32.0	30.2	3.27	30.2	28.6	3.47
1380	72	44.6	24.3	3.24	42.5	23.5	3.37	40.3	22.7	3.53	37.8	21.9	3.70	35.6	21.3	3.86
	67	41.4	31.6	3.04	39.2	31.1	3.17	37.1	30.2	3.34	34.9	29.2	3.50	32.8	28.4	3.67
	62	38.9	37.0	2.91	37.4	35.4	3.08	35.3	33.8	3.24	33.8	32.1	3.40	31.7	30.2	3.60
	57	38.9	37.0	2.91	37.4	35.4	3.08	35.3	33.8	3.24	33.8	32.1	3.40	31.7	30.2	3.60

Sensible heat capacities shown are based on 80F DB entering air at the evaporator coil.

For sensible heat capacities at other than 80F DB, deduct 84 BTU/h per 100 CFM of evaporator coil air for each degree below 80F, or add 84 BTU/h per 100 CFM of evaporator coil air per degree above 80F.

CAPACITIES AT 95F OUTDOOR., 75F DB AND 63F WB INDOOR:

TOTAL MBTU/h 34.0S SENSIBLE MBTU/h 25.8 LATENT MBTU/h 8.1

EXPANDED RATINGS—COOLING (CONT.)

PHKJ042-1F

INDOOR AIR		CONDENSER AIR TEMPERATURE														
		75			85			95			105			115		
SCFM	WB	TOTAL MBTU/h	SENS MBTU/h	WATTS KWH	TOTAL MBTU/h	SENS MBTU/h	WATTS KWH	TOTAL MBTU/h	SENS MBTU/h	WATTS KWH	TOTAL MBTU/h	SENS MBTU/h	WATTS KWH	TOTAL MBTU/h	SENS MBTU/h	WATTS KWH
1133	72	46.4	22.5	3.42	44.4	21.6	3.60	42.0	20.7	3.75	39.6	19.8	3.93	37.2	18.9	4.11
	67	42.4	27.9	3.20	40.4	27.0	3.35	38.4	26.1	3.53	36.0	25.2	3.71	33.6	25.2	3.89
	62	39.2	33.0	2.98	37.2	32.1	3.16	36.2	31.2	3.35	35.2	30.3	3.53	33.2	29.1	3.67
	57	37.6	35.7	2.91	36.0	34.2	3.09	34.4	32.7	3.27	32.4	30.9	3.49	30.8	29.1	3.64
1333	72	48.4	24.9	3.53	46.0	24.0	3.67	43.6	23.1	3.85	41.2	22.5	4.04	38.4	21.3	4.22
	67	44.4	31.8	3.31	42.4	30.9	3.45	40.0	30.0	3.64	37.6	29.1	3.82	35.2	28.2	4.00
	62	41.2	38.1	3.13	39.2	36.9	3.27	37.2	35.4	3.45	35.6	33.6	3.64	33.6	31.8	3.85
	57	40.8	38.7	3.09	38.8	37.2	3.27	37.2	35.4	3.45	35.6	33.6	3.64	33.6	31.8	3.85
1533	72	49.6	27.0	3.60	47.2	26.1	3.75	44.8	25.2	3.93	42.0	24.3	4.11	39.6	23.7	4.29
	67	46.0	35.1	3.38	43.6	34.5	3.53	41.2	33.6	3.71	38.8	32.4	3.89	36.4	31.5	4.07
	62	43.2	41.1	3.24	41.6	39.3	3.42	39.2	37.5	3.60	37.6	35.7	3.78	35.2	33.6	4.00
	57	43.2	41.1	3.24	41.6	39.3	3.42	39.2	37.5	3.60	37.6	35.7	3.78	35.2	33.6	4.00

Sensible heat capacities shown are based on 80F DB entering air at the evaporator coil.
 For sensible heat capacities at other than 80F DB, deduct 84 BTU/h per 100 CFM of evaporator coil air for each degree below 80F, or add 84 BTU/h per 100 CFM of evaporator coil air per degree above 80F. CAPACITIES AT 95F OUTDOOR., 75F DB AND 63F WB INDOOR:
 TOTAL MBTU/h 37.8 SENSIBLE MBTU/h 28.7 LATENT MBTU/h 9.0

PHKJ048-1F

INDOOR AIR		CONDENSER AIR TEMPERATURE														
		75F			85F			95F			105F			115F		
SCFM	WB	TOTAL MBTU/h	SENS MBTU/h	WATTS KWH	TOTAL MBTU/h	SENS MBTU/h	WATTS KWH	TOTAL MBTU/h	SENS MBTU/h	WATTS KWH	TOTAL MBTU/h	SENS MBTU/h	WATTS KWH	TOTAL MBTU/h	SENS MBTU/h	WATTS KWH
1332	72	54.5	26.4	4.02	52.2	25.3	4.23	49.4	24.3	4.40	46.5	23.2	4.61	43.7	22.2	4.83
	67	49.8	32.7	3.76	47.5	31.7	3.93	45.1	30.6	4.14	42.3	29.6	4.36	39.5	29.6	4.57
	62	46.1	38.7	3.50	43.7	37.7	3.72	42.5	36.6	3.93	41.4	35.6	4.14	39.0	34.1	4.32
	57	44.2	41.9	3.42	42.3	40.1	3.63	40.4	38.4	3.85	38.1	36.3	4.10	36.2	34.1	4.27
1567	72	56.9	29.2	4.14	54.1	28.2	4.32	51.2	27.1	4.53	48.4	26.4	4.74	45.1	25.0	4.96
	67	52.2	37.3	3.89	49.8	36.3	4.06	47.0	35.2	4.27	44.2	34.1	4.49	41.4	33.1	4.70
	62	48.4	44.7	3.67	46.1	43.3	3.85	43.7	41.5	4.06	41.8	39.4	4.27	39.5	37.3	4.53
	57	47.9	45.4	3.63	45.6	43.6	3.85	43.7	41.5	4.06	41.8	39.4	4.27	39.5	37.3	4.53
1802	72	58.3	31.7	4.23	55.5	30.6	4.40	52.6	29.6	4.61	49.4	28.5	4.83	46.5	27.8	5.04
	67	54.1	41.2	3.97	51.2	40.5	4.14	48.4	39.4	4.36	45.6	38.0	4.57	42.8	37.0	4.79
	62	50.8	48.2	3.80	48.9	46.1	4.02	46.1	44.0	4.23	44.2	41.9	4.44	41.4	39.4	4.70
	57	50.8	48.2	3.80	48.9	46.1	4.02	46.1	44.0	4.23	44.2	41.9	4.44	41.4	39.4	4.70

Sensible heat capacities shown are based on 80F DB entering air at the evaporator coil.
 For sensible heat capacities at other than 80F DB, deduct 84 BTU/h per 100 CFM of evaporator coil air for each degree below 80F, or add 84 BTU/h per 100 CFM of evaporator coil air per degree above 80F. CAPACITIES AT 95F OUTDOOR., 75F DB AND 63F WB INDOOR:
 TOTAL MBTU/h 44.4 SENSIBLE MBTU/h 33.7 LATENT MBTU/h 10.7

PHKJ060-1F

INDOOR AIR		CONDENSER AIR TEMPERATURE														
		75F			85F			95F			105F			115F		
SCFM	WB	TOTAL MBTU/h	SENS MBTU/h	WATTS KWH	TOTAL MBTU/h	SENS MBTU/h	WATTS KWH	TOTAL MBTU/h	SENS MBTU/h	WATTS KWH	TOTAL MBTU/h	SENS MBTU/h	WATTS KWH	TOTAL MBTU/h	SENS MBTU/h	WATTS KWH
1490	72	61.0	29.7	4.94	58.4	28.5	5.21	55.2	27.3	5.42	52.1	26.1	5.68	48.9	24.9	5.94
	67	55.8	36.8	4.63	53.1	35.6	4.84	50.5	34.5	5.10	47.3	33.3	5.37	44.2	33.3	5.63
	62	51.5	43.6	4.31	48.9	42.4	4.58	47.6	41.2	4.84	46.3	40.0	5.10	43.7	38.4	5.31
	57	49.4	47.1	4.21	47.3	45.1	4.47	45.2	43.2	4.73	42.6	40.8	5.05	40.5	38.4	5.26
1753	72	63.6	32.9	5.10	60.5	31.7	5.31	57.3	30.5	5.58	54.2	29.7	5.84	50.5	28.1	6.10
	67	58.4	42.0	4.79	55.8	40.8	5.00	52.6	39.6	5.26	49.4	38.4	5.52	46.3	37.2	5.79
	62	54.2	50.3	4.52	51.5	48.7	4.73	48.9	46.7	5.00	46.8	44.4	5.26	44.2	42.0	5.58
	57	53.7	51.1	4.47	51.0	49.1	4.73	48.9	46.7	5.00	46.8	44.4	5.26	44.2	42.0	5.58
2016	72	65.2	35.6	5.21	62.1	34.5	5.42	58.9	33.3	5.68	55.2	32.1	5.94	52.1	31.3	6.21
	67	60.5	46.3	4.89	57.3	45.5	5.10	54.2	44.4	5.37	51.0	42.8	5.63	47.9	41.6	5.89
	62	56.8	54.3	4.68	54.7	51.9	4.94	51.5	49.5	5.21	49.4	47.1	5.47	46.3	44.4	5.79
	57	56.8	54.3	4.68	54.7	51.9	4.94	51.5	49.5	5.21	49.4	47.1	5.47	46.3	44.4	5.79

Sensible heat capacities shown are based on 80F DB entering air at the evaporator coil.
 For sensible heat capacities at other than 80F DB, deduct 84 BTU/h per 100 CFM of evaporator coil air for each degree below 80F, or add 84 BTU/h per 100 CFM of evaporator coil air per degree above 80F. CAPACITIES AT 95F OUTDOOR., 75F DB AND 63F WB INDOOR:
 TOTAL MBTU/h 49.7 SENSIBLE MBTU/h 37.9 LATENT MBTU/h 11.7

PRODUCT SPECIFICATIONS

HEATING PERFORMANCE @ 70 °F INSIDE TEMPERATURE

PHKJ024-1F

Outside °F	Heat BTU/h	KW	COP
62	31800	2.35	3.97
57	28800	2.23	3.80
52	25900	2.13	3.57
47	23000	2.04	3.30
42	20300	1.97	3.01
37	17700	1.92	2.71
32	15500	1.86	2.44
27	13600	1.81	2.20
22	12000	1.76	2.01
17	11000	1.70	1.90
12	10400	1.66	1.82
7	9800	1.63	1.77
2	9100	1.58	1.70
-3	8700	1.54	1.65

PHKJ030-1F

Outside °F	Heat BTU/h	KW	COP
62	38100	2.82	3.97
57	34500	2.65	3.81
52	31000	2.54	3.58
47	27600	2.45	3.30
42	24400	2.39	3.00
37	21600	2.33	2.71
32	19000	2.28	2.45
27	16900	2.20	2.25
22	15200	2.10	2.12
17	14000	1.95	2.10
12	13200	1.92	2.02
7	12500	1.88	1.95
2	11600	1.82	1.88
-3	11100	1.78	1.82

PHKJ036-1F

Outside °F	Heat BTU/h	KW	COP
62	45600	3.23	4.14
57	41500	3.09	3.94
52	36900	2.95	3.67
47	33000	2.81	3.45
42	29200	2.75	3.11
37	25900	2.71	2.81
32	23100	2.67	2.55
27	20800	2.64	2.33
22	19000	2.61	2.14
17	17700	2.60	2.00
12	16700	2.52	1.94
7	15800	2.48	1.87
2	14700	2.41	1.79
-3	14000	2.35	1.75

PHKJ042-1F

Outside °F	Heat BTU/h	KW	COP
62	50000	3.49	4.21
57	45300	3.27	4.06
52	40600	3.12	3.81
47	36200	3.03	3.50
42	32100	2.98	3.16
37	28600	2.97	2.82
32	25600	2.96	2.53
27	23500	2.95	2.32
22	22200	2.94	2.22
17	22000	2.93	2.20
12	20700	2.87	2.11
7	19600	2.81	2.05
2	18300	2.72	1.97
-3	17400	2.68	1.91

PHKJ048-1F

Outside °F	Heat BTU/h	KW	COP
62	59400	4.27	4.08
57	54100	4.08	3.89
52	48100	3.90	3.61
47	43000	3.71	3.40
42	37600	3.65	3.02
37	33100	3.59	2.71
32	29500	3.52	2.46
27	26600	3.45	2.27
22	24700	3.37	2.15
17	23600	3.30	2.10
12	22200	3.20	2.03
7	21100	3.15	1.96
2	19600	3.06	1.88
-3	18600	2.99	1.82

PHKJ060-1F

Outside °F	Heat BTU/h	KW	COP
62	74600	5.36	4.08
57	68000	5.13	3.88
52	60400	4.89	3.62
47	54000	4.66	3.40
42	47700	4.60	3.04
37	42400	4.52	2.75
32	38000	4.43	2.52
27	34600	4.33	2.35
22	32100	4.21	2.24
17	30600	4.08	2.20
12	28800	3.96	2.13
7	27300	3.90	2.05
2	25400	3.79	1.96
-3	24200	3.69	1.92

EVAPORATOR BLOWER SPECIFICATIONS

MODEL	SPEED	VOLTS		EXTERNAL STATIC PRESSURE (INCHES WATER)									
				0.1	0.2	0.3	0.4	0.5	0.6	0.7	0.8	0.9	1.0
PHKJ024-1F	LOW	230	CFM Watts	690 165	675 155	- -	- -	- -	- -	- -	- -	- -	- -
		208	CFM Watts	665 145	650 135	- -	- -	- -	- -	- -	- -	- -	- -
	MED	230	CFM Watts	925 235	900 230	860 220	840 210	785 200	755 190	- -	- -	- -	- -
		208	CFM Watts	900 225	880 205	835 195	815 190	755 185	- -	- -	- -	- -	- -
	HIGH	230	CFM Watts	1,185 365	1,175 355	1,135 340	1,085 325	1,005 310	970 290	930 260	880 235	- -	- -
		208	CFM Watts	1,160 335	1,155 325	1,110 310	1,060 300	980 285	945 265	895 235	835 210	- -	- -
PHKJ030-1F	LOW	230	CFM Watts	1,150 320	1,120 310	1,075 300	1,005 290	955 275	870 255	770 240	- -	- -	- -
		208	CFM Watts	1,110 355	1,080 285	1,055 255	900 240	900 240	8,100 230	- -	- -	- -	- -
	MED	230	CFM Watts	1,275 385	1,265 380	1,210 360	1,135 350	1,070 335	985 310	855 290	- -	- -	- -
		208	CFM Watts	1,250 355	1,245 340	1,185 335	1,110 330	1,045 300	9,602 285	820 265	- -	- -	- -
	HIGH	230	CFM Watts	1,345 435	1,335 430	1,275 415	1,210 400	1,135 390	1,035 375	925 355	785 330	- -	- -
		208	CFM Watts	1,310 405	1,315 400	1,250 385	1,175 375	1,110 365	1,010 350	890 330	740 305	- -	- -
PHKJ036-1F	LOW	230	CFM Watts	1,455 480	1,415 470	1,350 460	1,290 440	1,225 420	1,165 380	1,090 355	1,045 320	- -	- -
		208	CFM Watts	1,380 450	1,345 445	1,285 435	1,225 415	1,160 395	1,090 355	1,045 315	975 300	- -	- -
	HIGH	230	CFM Watts	1,725 550	1,630 520	1,590 510	1,560 500	1,520 480	1,400 430	1,315 410	1,245 390	1,185 375	- -
		208	CFM Watts	1,640 525	1,550 495	1,515 485	1,485 475	1,445 455	1,330 410	1,250 380	1,125 385	1,065 360	- -
PHKJ042-1F	LOW	230	CFM Watts	1,455 480	1,415 470	1,350 460	1,290 440	1,225 420	- -	- -	- -	- -	- -
		208	CFM Watts	1,380 450	1,345 445	1,285 435	1,225 415	- -	- -	- -	- -	- -	- -
	HIGH	230	CFM Watts	1,725 550	1,630 520	1,590 510	1,560 500	1,520 480	1,400 430	1,315 410	- -	- -	- -
		208	CFM Watts	1,640 525	1,550 495	1,515 485	1,485 475	1,445 455	1,330 410	1,250 380	- -	- -	- -
PHKJ048-1F	LOW	230	CFM Watts	1,730 690	1,685 670	1,635 640	1,580 600	1,490 565	- -	- -	- -	- -	- -
		208	CFM Watts	1,610 665	1,600 650	1,580 625	1,490 565	- -	- -	- -	- -	- -	- -
	HIGH	230	CFM Watts	1,990 840	1,960 810	1,880 765	1,795 710	1,695 670	1,595 635	- -	- -	- -	- -
		208	CFM Watts	1,895 790	1,865 770	1,790 730	1,710 680	1,615 640	1,520 605	- -	- -	- -	- -
PHKJ060-1F	LOW	230	CFM Watts	2,160 910	2,125 865	2,085 830	2,025 800	1,970 765	- -	- -	- -	- -	- -
		208	CFM Watts	2,055 820	2,010 780	1,985 755	1,890 740	1,870 730	- -	- -	- -	- -	- -
	HIGH	230	CFM Watts	2,540 1115	2,470 1070	2,310 1020	2,280 985	2,220 945	2,095 895	- -	- -	- -	- -
		208	CFM Watts	2,425 1,055	2,350 1,020	2,200 985	2,150 935	2,120 905	1,995 855	- -	- -	- -	- -

NOTES:

1. Data shown is dry coil. Wet coil pressure drop is approximately 0.1" H₂O, for two-row indoor coil; 0.2" H₂O, for three-row indoor coil; and 0.3" H₂O, for four-row indoor coil.
2. Data shown does not include filter pressure drop of approximately 0.08" H₂O.
3. All models should run no less than 350 CFM / ton; use higher speed tap or next size larger blower ASM. See Repair Parts list.

PRODUCT SPECIFICATIONS

HEAT KIT SELECTION

Model	PHKJ024-1F	PHKJ030-1F	PHKJ036-1F	PHKJ042-1F	PHKJ048-1F	PHKJ060-1F
HK05-1	✓	✓	✓	✓	✓	✓
HK08-1	✓	✓	✓	✓	✓	✓
HK10-*	✓	✓	✓	✓	✓	✓
HK15-*		✓	✓	✓	✓	✓
HK20-*			✓	✓	✓	✓

* 1, 3 or 4 Electrical Designator.

NOTE: See SS-311D (HKR Spec Sheet) for further information about Heat Kits

HEAT KIT ELECTRICAL DATA

Model	Nominal kW	Heater Ampacity 208/240V	Minimum Ampacity 208/240V	Maximum Overcurrent Protection 208/240V	Multiple Supply Circuit			
					Minimum Ampacity per Circuit @ 208/240V		Maximum Overcurrent Protection @ 208/240V	
					1	2	1	2
HK05-1*	4.75	17.2/19.8	22/25	30/30				
HK08-1*	7.00	25.3/29.2	32/37	60/60				
HK10-1*	9.50	34.4/39.6	43/50	60/60				
HK10-3	9.50	20.7/23.6	26/30	30/30				
HK15-1*	14.25	51.5/59.4	65/75	90/90	22/25	43/50	30/30	60/60
HK15-3	15.0	31.7/36.2	40/46	50/50				
HK15-4#	15.0	18.1	23	30				
HK20-1*	19.0	68.7/79.2	86/99	120/120	43/50	43/50	60/60	60/60
HK20-3	19.6	41.4/47.2	52/59	60/60				
HK20-4#	19.6	23.6	30	30				

* Circuit Breaker Models

Ratings at 480 VAC, Phase 3

NOTE: Ratings are at 208/240 VAC, except where noted

kW CORRECTION FACTOR

Supply Voltage	240	230	220	210	208
Correction Factor	1.00	0.93	0.85	0.78	0.76

Multiply the 240 VAC capacity by factors

ACCESSORIES

Description	Model #s		
Louvered Panel Kits	LPAK-01A	LPAK-02A	LPAK-03A
Room Thermostat	CHT18-60		
Outdoor Thermostat	OT18-60		
Outdoor Lock-out Thermostat	OT18-60		
Emergency Heat Relay Kit	EHR18-60		



Air Conditioning & Heating

Goodman Manufacturing Company, L.P., reserves the right to discontinue, or change at any time, specifications or designs without notice or without incurring obligations.

Copyright © 2006 • Goodman Manufacturing Company, L.P. • Houston, Texas
Goodman® brand products are proudly made in the USA.
Printed in the USA.