



Air Conditioning & Heating

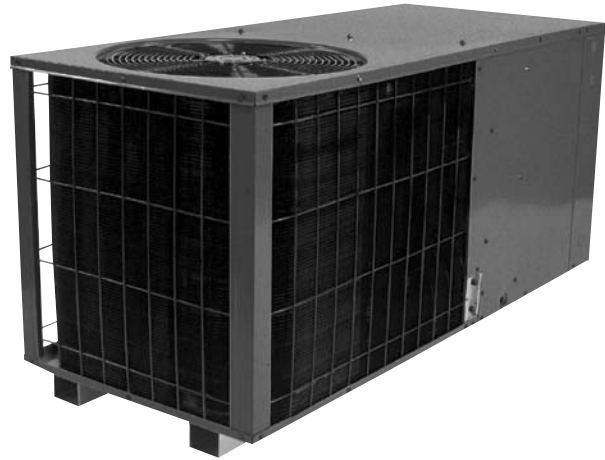
PHK SERIES  
10 SEER

Packaged  
Heat Pump

2 to 5 Ton

Cooling Capacity: 23,600 - 55,000 BTUH

Heating Capacity: 23,800 - 55,000 BTUH



*The PHK packaged heat pump is designed for ground-level, rooftop or side-by-side application. The PHK is approved for manufactured or modular homes.*

**Standard Features**

- Hermetically sealed compressor with internal relief valve
- Multi-speed evaporator blower motor; low-speed for normal or low-static application, high-speed for high-static application in manufactured homes
- Totally enclosed, permanently lubricated condenser fan motor
- Copper tube/aluminum fin coils
- Fully charged R-22 system
- Bi-flow liquid line filter drier
- Quiet-operating top condenser discharge
- Bottom pan rails elevate the unit above the slab
- Crankcase heater
- Suction line accumulator
- Check-flowrator expansion device

**Cabinet Construction**

- Powder-paint finish with 500-hour salt spray approval
- Fully insulated air handling compartment
- Convenient access panels
- When properly anchored, meets the 2001 Florida Building Code unit integrity requirements for hurricane-type winds

**Accessories**

- Roof Curb
- Downflow Plenum (includes filter rack)
- Manual Fresh Air Damper (to be used with Downflow Plenum)
- Economizer (to be used with Downflow Plenum)
- Louvered Panel Kit (LPAK-00A, LPAK-01A, LPAK-02A)
- Square-to-Round Duct Converter for Round Duct applications (horizontal and downflow)
- Elbow and Flashing Downflow Kit
- Room Thermostat (CHT18-60)
- Outdoor Thermostat (OT18-60); required for all heat pumps if outdoor ambient temperature is 0°F with 50% or higher relative humidity
- Outdoor Lockout Thermostat/Emergency Heat Relay Kit for staging electric heat (OT/EHR18-60)
- Heat Kit from 5 to 20 kW with plug-in connection

**Accessory Heat Kit Features**

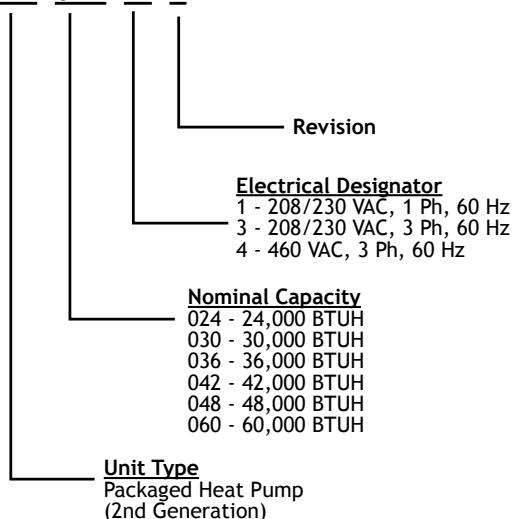
- Controlled by sequencers for better temperature control (single-phase units only)
- Control circuitry arranged to readily permit staging (HK10, 15, 20-1 only)
- Primary/secondary limit protection
- Rust-resistant nickel chromium heating elements
- Factory-installed circuit breakers on certain models (see Electrical Data)



# PRODUCT SPECIFICATIONS

## Nomenclature

### PHK 024 -1 E



## Specifications

MODELS	PHK024-1F	PHK030-1F	PHK036-1F	PHK036-3F	PHK042-1F	PHK048-1F	PHK048-3F	PHK060-1F	PHK060-3F
Total Cooling (BTUH)	23,600	28,200	35,600	35,600	40,500	46,000	46,000	55,000	55,000
Sensible Cooling (BTUH)	17,200	21,600	26,700	26,700	30,400	35,200	35,200	42,400	42,400
SEER <sup>1</sup>	10.0	10.0	10.0	10.0	10.0	10.0	10.0	10.0	10.0
EER <sup>2</sup>	9.0	9.0	9.0	9.0	9.0	9.0	9.0	9.0	9.0
Heating BTUH	23,800	27,400	34,400	34,400	40,000	44,000	44,000	55,000	55,000
C.O.P. (47°F)	2.80	3.00	3.00	3.00	3.20	3.10	3.10	3.50	3.50
Heating (BTUH) (17°F)	12,000	14,600	20,000	20,000	22,400	24,000	24,000	32,000	32,000
C.O.P. (17°F)	1.90	1.90	2.00	2.00	2.00	2.00	2.00	2.10	2.10
H.S.P.F.	6.80	6.80	7.00	7.00	7.50	6.80	6.80	7.50	7.50
Sound Rating (bels)	8.00	8.00	8.40	8.40	8.40	8.40	8.40	8.40	8.40
<b>Indoor Blower</b>									
Type	DD	DD	DD	DD	DD	DD	DD	DD	DD
Size (D" x W")	9 X 6	9 X 6	9 X 6	9 X 8	9 X 8	9 X 8	9 X 8	10 x 8	10 x 8
Motor Horsepower	1/5	1/3	1/3	1/3	1/2	1/2	1/2	3/4	3/4
<b>Evaporator Coil</b>									
Face Area (ft <sup>2</sup> )	3.33	3.33	5.25	5.25	6.22	6.22	6.22	6.22	6.22
Fins per Inch	14	14	14	14	14	14	14	14	14
No. of Rows	2	2	2	2	2	4	4	4	4
<b>Outdoor Fan</b>									
Fan Diameter	18	18	22	22	22	22	22	22	22
Motor Horsepower	1/6	1/6	1/4	1/4	1/4	1/4	1/4	1/3	1/3
<b>Condenser Coil</b>									
Face Area (ft <sup>2</sup> )	12.1	12.1	14.7	14.7	16.2	16.2	16.2	16.2	16.2
Fins per Inch	19	19	19	19	19	19	19	19	19
No. of Rows	1	1	1	1	1	1	1	1	1
<b>Electrical</b>									
Ph	1	1	1	3	1	1	3	1	3
Volts	208/230	208/230	208/230	208/230	208/230	208/230	208/230	208/230	208/230
Compressor RLA	11.2	14.4	16.2	10.3	17.1	18.3	12.0	25.0	18.0
Compressor LRA	61.0	82.0	96.0	75.0	105.0	102.0	91.0	163.0	129.0
Indoor Blower FLA	1.5	2.6	2.6	2.6	3.6	3.6	3.6	5.1	5.1
Outdoor Blower FLA	1.0	1.0	1.6	1.6	1.6	2.5	2.5	2.5	2.5
Minimum Circuit Ampacity	16.5	21.6	24.5	17.1	20.6	31.1	21.9	38.9	30.1
Maximum Overcurrent Protection	20	30	40	20	40	40	30	60	40
Net Weight (pounds)	255	260	340	340	355	385	385	390	390
Shipping Weight (pounds)	270	275	365	365	380	410	410	415	415
<b>Capacities @ 95°F Outside Air, 75°F Dry Bulb @ 63°F Wet Bulb Inside</b>									
Total MBTU	21.7	27.2	32.5	32.5	38.2	43.4	43.4	50.5	50.0
Sensible MBTU	15.6	20.2	23.3	23.3	29.1	30.0	30.0	36.3	36.3

(1) Certified per ARI 240

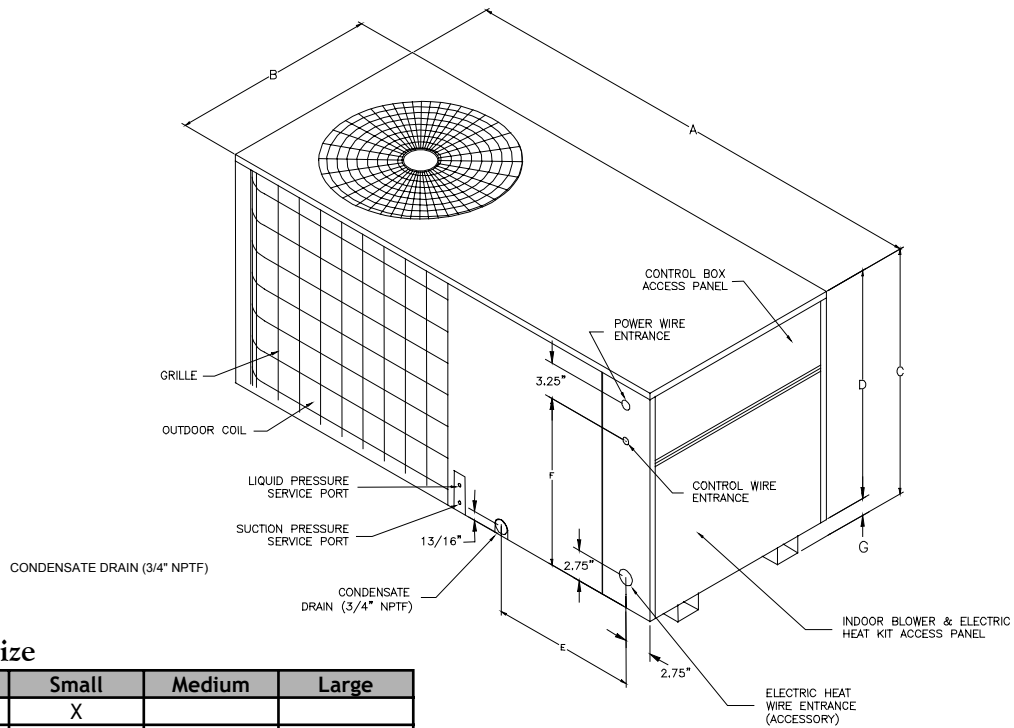
(2) BTU/Watt @ 80 / 67 °F inside - 95 °F outside air

(3) M.O.P. (Maximum Overcurrent Protection)

Note - May use fuses or HACR type Circuit Breakers of the same size as noted

# PRODUCT SPECIFICATIONS

## Dimensions

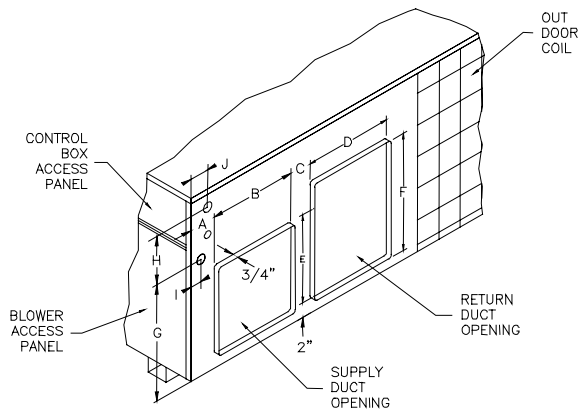


### Chassis Size

Model	Small	Medium	Large
PHK024-1F	X		
PHK030-1F	X		
PHK036-1F		X	
PHK036-3F			X
PHK042-1F			X
PHK048-1F			X
PHK048-3F			X
PHK060-1F			X
PHK060-3F			X

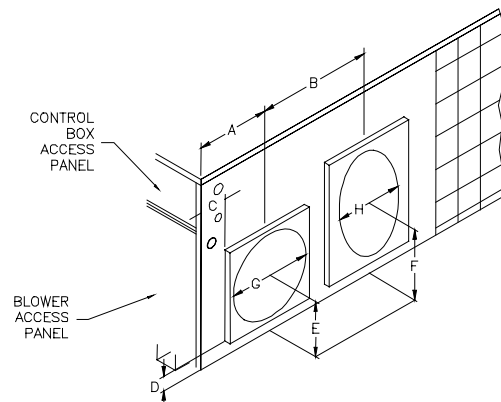
Chassis	A	B	C	D	E	F	G
Large	63.15"	32.15"	34.62"	32.50"	19.56"	27.06"	2.12"
Medium	63.15"	32.15"	29.62"	27.50"	19.56"	22.06"	2.12"
Small	56.35"	24.14"	27.12"	25.00"	16.68"	19.56"	2.12"

### Unit with Regular Duct Panel



Chassis	A	B	C	D	E	F	G	H	I	J
Small	3.75"	12"	4.25"	12"	12"	20"	16.18"	6.62"	2.59"	2.59"
Medium	3.75"	14"	6.25"	14"	14"	22"	18.68"	6.62"	2.25"	2.75"
Large	3.75"	14"	6.25"	14"	14"	24"	18.68"	11.62"	2.25"	2.75"

### Unit with Circular Duct Panel Added



Chassis	A	B	C	D	E	F	G	H*
Small	9.62"	16.24"	3.62"	2"	8"	12"	12"	14"
Medium	10.75"	20.25"	3.75"	2"	9"	13"	14"	16"
Large	10.75"	20.25"	3.75"	2"	9"	15"	14"	18"

\* Return opening is equivalent to round duct stated

# PRODUCT SPECIFICATIONS

## Expanded Ratings—Cooling

### PHK024-1F

INDOOR AIR		CONDENSER AIR TEMPERATURE														
SCFM	WB	75F			85F			95F			105F			115F		
		Total Mbtuh	Sens Mbtuh	Watts Kwh	Total Mbtuh	Sens Mbtuh	Watts Kwh	Total Mbtuh	Sens Mbtuh	Watts Kwh	Total Mbtuh	Sens Mbtuh	Watts Kwh	Total Mbtuh	Sens Mbtuh	Watts Kwh
669	72	27.4	12.9	2.46	26.2	12.4	2.60	24.8	11.9	2.70	23.4	11.4	2.83	21.9	10.8	2.96
	67	25.0	16.0	2.31	23.8	15.5	2.41	22.7	15.0	2.54	21.2	14.4	2.67	19.8	14.4	2.81
	62	23.1	18.9	2.15	21.9	18.4	2.28	21.4	17.9	2.41	20.8	17.4	2.54	19.6	16.7	2.65
	57	22.2	20.5	2.10	21.2	19.6	2.23	20.3	18.7	2.36	19.1	17.7	2.52	18.2	16.7	2.62
787	72	28.6	14.3	2.54	27.1	13.8	2.65	25.7	13.2	2.78	24.3	12.9	2.91	22.7	12.2	3.04
	67	26.2	18.2	2.39	25.0	17.7	2.49	23.6	17.2	2.62	22.2	16.7	2.75	20.8	16.2	2.88
	62	24.3	21.8	2.26	23.1	21.2	2.36	21.9	20.3	2.49	21.0	19.3	2.62	19.8	18.2	2.78
	57	24.1	22.2	2.23	22.9	21.3	2.36	21.9	20.3	2.49	21.0	19.3	2.62	19.8	18.2	2.78
905	72	29.3	15.5	2.60	27.8	15.0	2.70	26.4	14.4	2.83	24.8	13.9	2.96	23.4	13.6	3.09
	67	27.1	20.1	2.44	25.7	19.8	2.54	24.3	19.3	2.67	22.9	18.6	2.81	21.5	18.1	2.94
	62	25.5	23.6	2.33	24.5	22.5	2.46	23.1	21.5	2.60	22.2	20.5	2.73	20.8	19.3	2.88
	57	25.5	23.6	2.33	24.5	22.5	2.46	23.1	21.5	2.60	22.2	20.5	2.73	20.8	19.3	2.88

Sensible heat capacities shown are based on 80F DB entering air at the evaporator coil.

For sensible heat capacities at other than 80F DB, deduct 84 BTUH per 100 CFM of evaporator coil air for each degree below 80F; or add 84 BTUH per 100 CFM of evaporator coil air per degree above 80F.

CAPACITIES AT 95F OUTDOOR., 75F DB AND 63F WB INDOOR

TOTAL MBTUH 22.3      SENSIBLE MBTUH 16.4      LATENT MBTUH 5.9

### PHK030-1F

INDOOR AIR		CONDENSER AIR TEMPERATURE														
SCFM	WB	75F			85F			95F			105F			115F		
		Total Mbtuh	Sens Mbtuh	Watts Kwh	Total Mbtuh	Sens Mbtuh	Watts Kwh	Total Mbtuh	Sens Mbtuh	Watts Kwh	Total Mbtuh	Sens Mbtuh	Watts Kwh	Total Mbtuh	Sens Mbtuh	Watts Kwh
799	72	32.7	16.2	2.95	31.3	15.6	3.10	29.6	14.9	3.23	27.9	14.3	3.38	26.2	13.6	3.54
	67	29.9	20.1	2.76	28.5	19.4	2.88	27.1	18.8	3.04	25.4	18.1	3.20	23.7	18.1	3.35
	62	27.6	23.8	2.57	26.2	23.1	2.73	25.5	22.5	2.88	24.8	21.8	3.04	23.4	21.0	3.16
	57	26.5	25.7	2.51	25.4	24.6	2.66	24.3	23.5	2.82	22.8	22.2	3.01	21.7	21.0	3.13
940	72	34.1	17.9	3.04	32.4	17.3	3.16	30.7	16.6	3.32	29.0	16.2	3.48	27.1	15.3	3.63
	67	31.3	22.9	2.85	29.9	22.2	2.98	28.2	21.6	3.13	26.5	21.0	3.29	24.8	20.3	3.45
	62	29.0	27.4	2.69	27.6	26.6	2.82	26.2	25.5	2.98	25.1	24.2	3.13	23.7	22.9	3.32
	57	28.8	27.9	2.66	27.4	26.8	2.82	26.2	25.5	2.98	25.1	24.2	3.13	23.7	22.9	3.32
1081	72	35.0	19.4	3.10	33.3	18.8	3.23	31.6	18.1	3.38	29.6	17.5	3.54	27.9	17.1	3.70
	67	32.4	25.3	2.91	30.7	24.8	3.04	29.0	24.2	3.20	27.4	23.3	3.35	25.7	22.7	3.51
	62	30.5	29.6	2.79	29.3	28.3	2.95	27.6	27.0	3.10	26.5	25.7	3.26	24.8	24.2	3.45
	57	30.5	29.6	2.79	29.3	28.3	2.95	27.6	27.0	3.10	26.5	25.7	3.26	24.8	24.2	3.45

Sensible heat capacities shown are based on 80F DB entering air at the evaporator coil. For sensible heat capacities at other than 80F DB, deduct 84 BTUH per 100 CFM of evaporator coil air for each degree below 80F; or add 84 BTUH per 100 CFM of evaporator coil air per degree above 80F.

CAPACITIES AT 95F OUTDOOR., 75F DB AND 63F WB INDOOR

TOTAL MBTUH 26.6      SENSIBLE MBTUH 20.8      LATENT MBTUH 5.9

### PHK036-1F/3F

INDOOR AIR		CONDENSER AIR TEMPERATURE														
SCFM	WB	75F			85F			95F			105F			115F		
		Total MBTUH	Sens MBTUH	Watts KWH	Total MBTUH	Sens MBTUH	Watts KWH	Total MBTUH	Sens MBTUH	Watts KWH	Total MBTUH	Sens MBTUH	Watts KWH	Total MBTUH	Sens MBTUH	Watts KWH
1009	72	41.3	20.0	3.72	39.5	19.2	3.92	37.4	18.4	4.07	35.2	17.6	4.27	33.1	16.8	4.47
	67	37.7	24.8	3.48	36.0	24.0	3.64	34.2	23.2	3.84	32.0	22.4	4.03	29.9	22.4	4.23
	62	34.9	29.4	3.24	33.1	28.6	3.44	32.2	27.8	3.64	31.3	27.0	3.84	29.5	25.9	4.00
	57	33.5	31.8	3.16	32.0	30.4	3.36	30.6	29.1	3.56	28.8	27.5	3.80	27.4	25.9	3.96
1187	72	43.1	22.2	3.84	40.9	21.4	4.00	38.8	20.6	4.19	36.7	20.0	4.39	34.2	19.0	4.59
	67	39.5	28.3	3.60	37.7	27.5	3.76	35.6	26.7	3.96	33.5	25.9	4.15	31.3	25.1	4.35
	62	36.7	33.9	3.40	34.9	32.8	3.56	33.1	31.5	3.76	31.7	29.9	3.96	29.9	28.3	4.19
	57	36.3	34.4	3.36	34.5	33.1	3.56	33.1	31.5	3.76	31.7	29.9	3.96	29.9	28.3	4.19
1365	72	44.1	24.0	3.92	42.0	23.2	4.07	39.9	22.4	4.27	37.4	21.6	4.47	35.2	21.1	4.67
	67	40.9	31.2	3.68	38.8	30.7	3.84	36.7	29.9	4.03	34.5	28.8	4.23	32.4	28.0	4.43
	62	38.4	36.6	3.52	37.0	35.0	3.72	34.9	33.4	3.92	33.5	31.8	4.11	31.3	29.9	4.35
	57	38.4	36.6	3.52	37.0	35.0	3.72	34.9	33.4	3.92	33.5	31.8	4.11	31.3	29.9	4.35

Sensible heat capacities shown are based on 80F DB entering air at the evaporator coil.

For sensible heat capacities at other than 80F DB, deduct 84 BTUH per 100 CFM of evaporator coil air for each degree below 80F; or add 84 BTUH per 100 CFM of evaporator coil air per degree above 80F.

CAPACITIES AT 95F OUTDOOR., 75F DB AND 63F WB INDOOR

TOTAL MBTUH 33.6      SENSIBLE MBTUH 25.6      LATENT MBTUH 8.0

# PRODUCT SPECIFICATIONS

## Expanded Ratings—Cooling (cont.)

### PHK042-1F

INDOOR AIR		CONDENSER AIR TEMPERATURE														
SCFM	WB	75F			85F			95F			105F			115F		
		Total Mbtuh	Sens Mbtuh	Watts Kwh	Total Mbtuh	Sens Mbtuh	Watts Kwh	Total Mbtuh	Sens Mbtuh	Watts Kwh	Total Mbtuh	Sens Mbtuh	Watts Kwh	Total Mbtuh	Sens Mbtuh	Watts Kwh
1148	72	47.0	22.8	4.23	45.0	21.9	4.46	42.5	21.0	4.64	40.1	20.1	4.86	37.7	19.2	5.09
	67	42.9	28.3	3.96	40.9	27.4	4.14	38.9	26.4	4.37	36.5	25.5	4.59	34.0	25.5	4.82
	62	39.7	33.4	3.69	37.7	32.5	3.92	36.7	31.6	4.14	35.6	30.7	4.37	33.6	29.5	4.55
	57	38.1	36.2	3.60	36.5	34.7	3.83	34.8	33.1	4.05	32.8	31.3	4.32	31.2	29.5	4.50
1350	72	49.0	25.2	4.37	46.6	24.3	4.55	44.1	23.4	4.77	41.7	22.8	5.00	38.9	21.6	5.22
	67	45.0	32.2	4.10	42.9	31.3	4.28	40.5	30.4	4.50	38.1	29.5	4.73	35.6	28.6	4.95
	62	41.7	38.6	3.87	39.7	37.4	4.05	37.7	35.9	4.28	36.0	34.0	4.50	34.0	32.2	4.77
	57	41.3	39.2	3.83	39.3	37.7	4.05	37.7	35.9	4.28	36.0	34.0	4.50	34.0	32.2	4.77
1553	72	50.2	27.4	4.46	47.8	26.4	4.64	45.4	25.5	4.86	42.5	24.6	5.09	40.1	24.0	5.31
	67	46.6	35.6	4.19	44.1	35.0	4.37	41.7	34.0	4.59	39.3	32.8	4.82	36.9	31.9	5.04
	62	43.7	41.6	4.01	42.1	39.8	4.23	39.7	38.0	4.46	38.1	36.2	4.68	35.6	34.0	4.95
	57	43.7	41.6	4.01	42.1	39.8	4.23	39.7	38.0	4.46	38.1	36.2	4.68	35.6	34.0	4.95

Sensible heat capacities shown are based on 80F DB entering air at the evaporator coil.

For sensible heat capacities at other than 80F DB, deduct 84 BTUH per 100 CFM of evaporator coil air for each degree below 80F; or add 84 BTUH per 100 CFM of evaporator coil air per degree above 80F.

CAPACITIES AT 95F OUTDOOR., 75F DB AND 63F WB INDOOR  
 TOTAL MBTUH 38.2      SENSIBLE MBTUH 29.1      LATENT MBTUH 9.1

### PHK048-1F/3F

INDOOR AIR		CONDENSER AIR TEMPERATURE														
SCFM	WB	75F			85F			95F			105F			115F		
		Total MBTUH	Sens MBTUH	Watts KWH	Total MBTUH	Sens MBTUH	Watts KWH	Total MBTUH	Sens MBTUH	Watts KWH	Total MBTUH	Sens MBTUH	Watts KWH	Total MBTUH	Sens MBTUH	Watts KWH
1303	72	53.4	26.4	4.80	51.1	25.3	5.06	48.3	24.3	5.26	45.5	23.2	5.52	42.8	22.2	5.78
	67	48.8	32.7	4.50	46.5	31.7	4.70	44.2	30.6	4.96	41.4	29.6	5.21	38.6	29.6	5.47
	62	45.1	38.7	4.19	42.8	37.7	4.45	41.6	36.6	4.70	40.5	35.6	4.96	38.2	34.1	5.16
	57	43.2	41.9	4.09	41.4	40.1	4.34	39.6	38.4	4.60	37.3	36.3	4.91	35.4	34.1	5.11
1533	72	55.7	29.2	4.96	52.9	28.2	5.16	50.1	27.1	5.42	47.4	26.4	5.67	44.2	25.0	5.93
	67	51.1	37.3	4.65	48.8	36.3	4.86	46.0	35.2	5.11	43.2	34.1	5.37	40.5	33.1	5.62
	62	47.4	44.7	4.40	45.1	43.3	4.60	42.8	41.5	4.86	40.9	39.4	5.11	38.6	37.3	5.42
	57	46.9	45.4	4.34	44.6	43.6	4.60	42.8	41.5	4.86	40.9	39.4	5.11	38.6	37.3	5.42
1763	72	57.0	31.7	5.06	54.3	30.6	5.26	51.5	29.6	5.52	48.3	28.5	5.78	45.5	27.8	6.03
	67	52.9	41.2	4.75	50.1	40.5	4.96	47.4	39.4	5.21	44.6	38.0	5.47	41.9	37.0	5.72
	62	49.7	48.2	4.55	47.8	46.1	4.80	45.1	44.0	5.06	43.2	41.9	5.32	40.5	39.4	5.62
	57	49.7	48.2	4.55	47.8	46.1	4.80	45.1	44.0	5.06	43.2	41.9	5.32	40.5	39.4	5.62

Sensible heat capacities shown are based on 80F DB entering air at the evaporator coil.

For sensible heat capacities at other than 80F DB, deduct 84 BTUH per 100 CFM of evaporator coil air for each degree below 80F; or add 84 BTUH per 100 CFM of evaporator coil air per degree above 80F.

CAPACITIES AT 95F OUTDOOR., 75F DB AND 63F WB INDOOR  
 TOTAL MBTUH 43.4      SENSIBLE MBTUH 33.8      LATENT MBTUH 9.6

### PHK060-1F/3F

INDOOR AIR		CONDENSER AIR TEMPERATURE														
SCFM	WB	75F			85F			95F			105F			115F		
		Total Mbtuh	Sens Mbtuh	Watts Kwh	Total Mbtuh	Sens Mbtuh	Watts Kwh	Total Mbtuh	Sens Mbtuh	Watts Kwh	Total Mbtuh	Sens Mbtuh	Watts Kwh	Total Mbtuh	Sens Mbtuh	Watts Kwh
1558	72	63.8	31.8	5.74	61.1	30.5	6.05	57.8	29.3	6.29	54.5	28.0	6.60	51.2	26.7	6.91
	67	58.3	39.4	5.38	55.6	38.2	5.62	52.8	36.9	5.93	49.5	35.6	6.23	46.2	35.6	6.54
	62	53.9	46.6	5.01	51.2	45.4	5.32	49.8	44.1	5.62	48.4	42.8	5.93	45.7	41.1	6.17
	57	51.7	50.5	4.89	49.5	48.3	5.19	47.3	46.2	5.50	44.6	43.7	5.87	42.4	41.1	6.11
1833	72	66.6	35.2	5.93	63.3	33.9	6.17	60.0	32.6	6.48	56.7	31.8	6.78	52.8	30.1	7.09
	67	61.1	44.9	5.56	58.3	43.7	5.81	55.0	42.4	6.11	51.7	41.1	6.42	48.4	39.9	6.72
	62	56.7	53.8	5.26	53.9	52.2	5.50	51.2	50.0	5.81	49.0	47.5	6.11	46.2	44.9	6.48
	57	56.1	54.7	5.19	53.4	52.6	5.50	51.2	50.0	5.81	49.0	47.5	6.11	46.2	44.9	6.48
2108	72	68.2	38.2	6.05	64.9	36.9	6.29	61.6	35.6	6.60	57.8	34.3	6.91	54.5	33.5	7.21
	67	63.3	49.6	5.68	60.0	48.8	5.93	56.7	47.5	6.23	53.4	45.8	6.54	50.1	44.5	6.84
	62	59.4	58.1	5.44	57.2	55.5	5.74	53.9	53.0	6.05	51.7	50.5	6.36	48.4	47.5	6.72
	57	59.4	58.1	5.44	57.2	55.5	5.74	53.9	53.0	6.05	51.7	50.5	6.36	48.4	47.5	6.72

Sensible heat capacities shown are based on 80F DB entering air at the evaporator coil.

For sensible heat capacities at other than 80F DB, deduct 84 BTUH per 100 CFM of evaporator coil air for each degree below 80F; or add 84 BTUH per 100 CFM of evaporator coil air per degree above 80F.

CAPACITIES AT 95F OUTDOOR., 75F DB AND 63F WB INDOOR  
 TOTAL MBTUH 51.9      SENSIBLE MBTUH 40.8      LATENT MBTUH 11.1

PRODUCT SPECIFICATIONS

Heating Performance @ 70 °F Inside Temperature

PHK024-1F

OUTSIDE F	HEAT BTUH	KW	COP
62	32,900	2.86	3.37
57	30,000	2.74	3.21
52	26,600	2.61	2.99
47	23,800	2.49	2.80
42	20,300	2.40	2.48
37	17,500	2.30	2.23
32	15,300	2.20	2.05
27	13,600	2.09	1.94
22	12,500	1.97	1.91
17	12,000	1.85	1.90
12	11,300	1.79	1.85
7	10,700	1.77	1.77
2	10,000	1.72	1.70
-3	9,500	1.67	1.67

PHK030-1F

OUTSIDE F	HEAT BTUH	KW	COP
62	37,900	3.08	3.61
57	34,500	2.95	3.43
52	31,000	2.81	3.23
47	27,400	2.68	3.00
42	23,900	2.55	2.75
37	20,700	2.43	2.50
32	18,000	2.34	2.26
27	16,000	2.27	2.06
22	14,800	2.26	1.93
17	14,600	2.25	1.90
12	13,700	2.21	1.82
7	13,000	2.16	1.77
2	12,100	2.09	1.70
-3	11,500	2.05	1.65

PHK036-1F/3F

OUTSIDE F	HEAT BTUH	KW	COP
62	47,500	3.86	3.61
57	43,000	3.66	3.45
52	38,600	3.49	3.24
47	34,400	3.36	3.00
42	30,500	3.26	2.74
37	27,000	3.18	2.49
32	24,100	3.11	2.27
27	21,900	3.05	2.10
22	20,500	3.00	2.01
17	20,000	2.93	2.00
12	18,800	2.87	1.92
7	17,900	2.81	1.86
2	16,600	2.73	1.79
-3	15,800	2.67	1.74

PHK042-1F

OUTSIDE F	HEAT BTUH	KW	COP
62	55,300	4.21	3.85
57	49,800	3.93	3.71
52	44,700	3.76	3.48
47	40,000	3.66	3.20
42	35,500	3.60	2.90
37	31,300	3.51	2.61
32	27,100	3.38	2.35
27	23,000	3.15	2.14
22	18,900	2.79	1.98
17	14,600	2.25	1.90
12	13,700	2.21	1.82
7	13,000	2.16	1.77
2	12,100	2.09	1.70
-3	11,500	2.05	1.65

PHK048-1F/3F

OUTSIDE F	HEAT BTUH	KW	COP
62	76,000	5.30	4.21
57	68,900	4.99	4.05
52	61,800	4.76	3.81
47	55,000	4.61	3.50
42	48,700	4.56	3.13
37	43,000	4.52	2.79
32	38,300	4.50	2.49
27	34,700	4.49	2.27
22	32,600	4.48	2.13
17	32,000	4.47	2.10
12	30,100	4.38	2.02
7	28,600	4.29	1.95
2	26,600	4.15	1.88
-3	25,300	4.06	1.82

PHK060-1F/3F

OUTSIDE F	HEAT BTUH	KW	COP
62	76,000	5.30	4.20
57	69,200	5.07	4.00
52	61,500	4.84	3.72
47	55,000	4.61	3.50
42	47,300	4.56	3.04
37	41,200	4.52	2.67
32	36,600	4.50	2.39
27	33,500	4.49	2.19
22	32,700	4.48	2.12
17	32,000	4.47	2.10
12	30,100	4.34	2.03
7	28,600	4.27	1.96
2	26,600	4.15	1.88
-3	25,300	4.05	1.83

# PRODUCT SPECIFICATIONS

## Evaporator Blower Specifications

Model	Speed	Volts	E.S.P (In. of H <sub>2</sub> O)											
			0.1	0.2	0.3	0.4	0.5	0.6	0.7	0.8	0.9	1.0		
PHK024-1F	LOW	230	CFM 690	675	-	-	-	-	-	-	-	-	-	-
		208	CFM 665	650	-	-	-	-	-	-	-	-	-	-
	MED	230	CFM 925	880	835	815	755	-	-	-	-	-	-	-
		208	CFM 900	900	860	840	785	755	-	-	-	-	-	-
	HIGH	230	CFM 1,185	1,175	1,135	1,085	1,005	970	930	880	-	-	-	-
		208	CFM 1,160	1,155	1,110	1,060	980	945	895	835	-	-	-	-
PHK030-1F	LOW	230	CFM 1,150	1,120	1,075	1,005	955	870	770	-	-	-	-	
		208	CFM 1,110	1,080	1,055	945	900	8,100	-	-	-	-	-	
	MED	230	CFM 1,275	1,265	1,210	1,135	1,070	985	855	-	-	-	-	
		208	CFM 1,250	1,245	1,185	1,110	1,045	960	820	-	-	-	-	
	HIGH	230	CFM 1,345	1,335	1,275	1,210	1,135	1,035	925	785	-	-	-	
		208	CFM 1,310	1,315	1,250	1,175	1,110	1,010	890	740	-	-	-	
PHK036-1F PHK036-3F	LOW	230	CFM 1,455	1,415	1,350	1,290	1,225	1,165	1,090	1,045	-	-	-	
		208	CFM 1,380	1,345	1,285	1,225	1,160	1,090	1,045	975	-	-	-	
	HIGH	230	CFM 1,725	1,630	1,590	1,560	1,520	1,400	1,315	1,245	1,185	-	-	
		208	CFM 1,640	1,550	1,515	1,485	1,445	1,330	1,250	1,125	1,065	-	-	
PHK042-1F	LOW	230	CFM 1,455	1,415	1,350	1,290	1,225	-	-	-	-	-	-	
		208	CFM 1,380	1,345	1,285	1,225	-	-	-	-	-	-	-	
	HIGH	230	CFM 1,725	1,630	1,590	1,560	1,520	1,400	1,315	-	-	-	-	
		208	CFM 1,640	1,550	1,515	1,485	1,445	1,330	1,250	-	-	-	-	
PHK048-1F PHK048-3F	LOW	230	CFM 1,730	1,685	1,635	1,580	1,490	-	-	-	-	-	-	
		208	CFM 1,610	1,600	1,580	1,490	-	-	-	-	-	-	-	
	HIGH	230	CFM 1,990	1,960	1,880	1,795	1,695	1,595	-	-	-	-	-	
		208	CFM 1,895	1,865	1,790	1,710	1,615	1,520	-	-	-	-	-	
PHK060-1F PHK060-3F	LOW	230	CFM 2,160	2,125	2,085	2,025	1,970	-	-	-	-	-	-	
		208	CFM 2,055	2,010	1,985	1,890	1,870	-	-	-	-	-	-	
	HIGH	230	CFM 2,540	2,470	2,310	2,280	2,220	2,095	-	-	-	-	-	
		208	CFM 2,425	2,350	2,200	2,150	2,120	1,995	-	-	-	-	-	

### NOTES:

1. Data shown is dry coil. Wet coil pressure drop is approximately 0.1" H<sub>2</sub>O for 2-row indoor coil; 0.2" H<sub>2</sub>O for 3-row indoor coil; and 0.3" H<sub>2</sub>O for 4-row indoor coil.
2. Data shown does not include filter pressure drop, approximately 0.08" H<sub>2</sub>O.
3. ALL MODELS SHOULD RUN NO LESS THAN 350 CFM / TON, USE HIGHER SPEED TAP OR NEXT SIZE LARGER BLOWER ASM. SEE REPAIR PARTS LIST.

# PRODUCT SPECIFICATIONS

## Heat Kit Selection

Model	PHK024-1F	PHK030-1F	PHK036-1F/-3F	PHK042-1F	PHK048-1F/-3F	PHK060-1F/-3F
HK05-1	✓	✓	✓	✓	✓	✓
HK08-1	✓	✓	✓	✓	✓	✓
HK10-*	✓	✓	✓	✓	✓	✓
HK15-*		✓	✓	✓	✓	✓
HK20-*			✓	✓	✓	✓

\* 1, 3 or 4 Electrical Designator.

NOTE: See SS-311D (HKR Spec Sheet) for further information about Heat Kits

## Heat Kit Electrical Data

Model	Nominal kW	Heater Ampacity 208/240V	Minimum Ampacity 208/240V	Maximum Overcurrent Protection 208/240V	Multiple Supply Circuit			
					Minimum Ampacity per Circuit @ 208/240V		Maximum Overcurrent Protection @ 208/240V	
					1	2	1	2
HK05-1*	4.75	17.2/19.8	22/25	30/30				
HK08-1*	7.00	25.3/29.2	32/37	60/60				
HK10-1*	9.50	34.4/39.6	43/50	60/60				
HK10-3	9.50	20.7/23.6	26/30	30/30				
HK15-1*	14.25	51.5/59.4	65/75	90/90	22/25	43/50	30/30	60/60
HK15-3	15.0	31.7/36.2	40/46	50/50				
HK15-4#	15.0	18.1	23	30				
HK20-1*	19.0	68.7/79.2	86/99	120/120	43/50	43/50	60/60	60/60
HK20-3	19.6	41.4/47.2	52/59	60/60				
HK20-4#	19.6	23.6	30	30				

\* Circuit Breaker Models

# Ratings at 480 VAC, Phase 3

NOTE: Ratings are at 208/240 VAC, except where noted

## Accessories

Model	LPAK-00A	LPAK-01A	LPAK-02A
PHK024-1F	X		
PHK030-1F	X		
PHK036-1F		X	
PHK036-3F			X
PHK042-1F			X
PHK048-1F			X
PHK048-3F			X
PHK060-1F			X
PHK060-3F			X

## kW Correction Factor

Supply Voltage	240	230	220	210	208
Correction Factor	1.00	0.93	0.85	0.78	0.76

Multiply the 240 VAC capacity by factors



Goodman Manufacturing Company, L.P., reserves the right to discontinue, or change at any time, specifications or designs without notice or without incurring obligations.  
Copyright © 2005 Goodman Manufacturing Company, L.P. • Houston, Texas • Printed in the USA. • Goodman products are made proudly in the USA.