

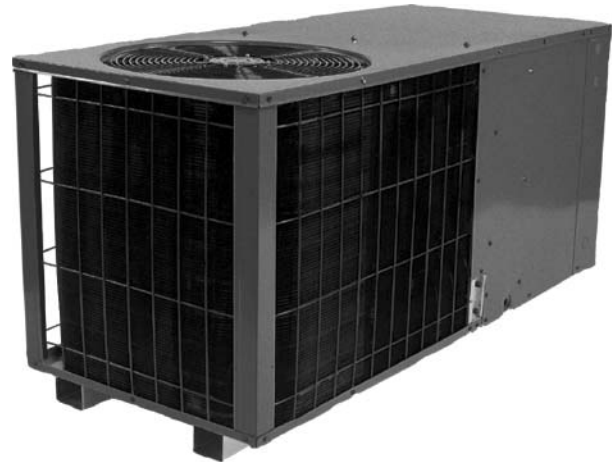


Air Conditioning & Heating

**PCKJ SERIES**  
**12 SEER**

**Packaged**  
**Air Conditioner**

**2 to 5 Ton**  
**Cooling Capacity:**  
**24,000 - 56,000 BTUH**



*The PCKJ packaged air conditioner allows for side-by-side ground-level or rooftop application and is approved for manufactured or modular homes.*



**Standard Features**

- Hermetically sealed, high-efficiency compressor with internal relief valve
- Two-speed evaporator blower motor; low speed for normal or low-static application/ high-speed for high-static application in manufactured homes
- Totally enclosed, permanently lubricated condenser fan motor
- Copper tube/aluminum fin coils
- Fully charged R-22 system
- Liquid line filter drier
- Quiet-operating top condenser discharge
- Fully insulated air handling compartment
- Bottom pan rails elevate the unit above the slab
- High-efficiency performance

**Cabinet Construction**

- Powder-paint finish with 500-hour salt spray approval
- Fully insulated air handling compartment
- Convenient access panels
- When properly anchored, meets the 2001 Florida Building Code unit integrity requirements for hurricane-type winds

**Accessories**

- Roof Curb
- Downflow Plenum (includes filter rack)
- Manual Fresh Air Damper (to be used with Downflow Plenum)
- Economizer (to be used with Downflow Plenum)
- Louvered Panel Kit (LPAK-00A, LPAK-01A, LPAK-02A, LPAK-03A)
- Square-to-Round Duct Converter for Round Duct applications (horizontal and downflow)
- Elbow and Flashing Downflow Kit
- Room Thermostat (CHT18-60)
- Outdoor Thermostat (OT18-60)
- Heat Kit from 5 to 20 kW with plug-in connection

**Accessory Heat Kit Features**

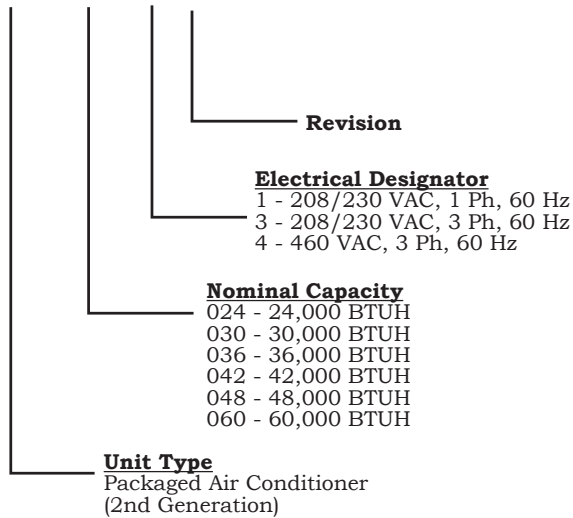
- Controlled by sequencers for better temperature control (single-phase units only)
- Control circuitry arranged to readily permit staging (HK10, 15, 20-1 only)
- Primary/secondary limit protection
- Rust-resistant nickel chromium heating elements
- Factory-installed circuit breakers on certain models (see Electrical Data)



# PRODUCT SPECIFICATIONS

## Nomenclature

### **PCKJ 024 -1 F**



All Units Are Direct Drive

## Specifications

	PCKJ024-1F	PCKJ030-1F	PCKJ036-1G	PCKJ042-1F	PCKJ048-1F	PCKJ060-1F
<b>Total Cooling (BTUH)</b>	24,000	29,000	36,000	40,200	46,000	56,000
<b>Sens. Cooling (BTUH)</b>	17,500	22,400	26,300	29,400	34,500	41,400
<b>SEER<sup>1</sup></b>	12.0	12.0	12.0	12.0	12.0	12.0
<b>EER<sup>2</sup></b>	10.8	10.6	10.7	10.7	10.4	10.2
<b>Sound Rating (bels)</b>	8.00	8.00	8.40	8.40	8.40	8.40
<b>Indoor Blower</b>						
<b>Type</b>	DD	DD	DD	DD	DD	DD
<b>Size (D" x W")</b>	9 X 6	9 X 6	9 X 8	9 X 8	9 X 8	10 X 8
<b>Motor Horsepower</b>	1/5	1/3	1/3	1/3	1/2	3/4
<b>Evaporator Coil</b>						
<b>Face Area (ft<sup>2</sup>)</b>	3.33	3.33	5.25	5.25	6.22	6.22
<b>Rows/Fins per Inch</b>	3/14	4/14	3/14	4/14	4/14	4/14
<b>Outdoor Fan</b>						
<b>Fan Diameter</b>	18"	18"	22"	22"	22"	22"
<b>Motor Horsepower</b>	1/6	1/6	1/4	1/4	1/4	1/3
<b>Condenser Coil</b>						
<b>Face Area (ft<sup>2</sup>)</b>	12.1	12.1	14.7	14.7	16.2	17.4
<b>Rows/Fins per Inch</b>	1/19	1/19	1/19	1/19	1/19	2/19
<b>Electrical</b>						
<b>Ph</b>	1	1	1	1	1	1
<b>Volts</b>	208 / 230	208 / 230	208 / 230	208 / 230	208 / 230	208 / 230
<b>Compr. RLA</b>	10.2	12.2	16.0	16.6	18.3	25.0
<b>Compr. LRA</b>	51.0	67.0	77.0	95.0	109.0	163.0
<b>Indoor Blw FLA</b>	1.5	2.6	2.6	2.6	3.6	5.1
<b>Outdoor Blw FLA</b>	0.9	0.9	1.6	1.6	1.6	2.5
<b>Minimum Circuit Ampacity</b>	15.2	18.8	22.7	25.0	28.1	38.9
<b>Maximum Overcurrent Protection</b>	20	30	30	40	40	60
<b>Net Weight (pounds)</b>	260	265	335	340	345	350
<b>Shipping Weight (pounds)</b>	275	280	350	355	370	375

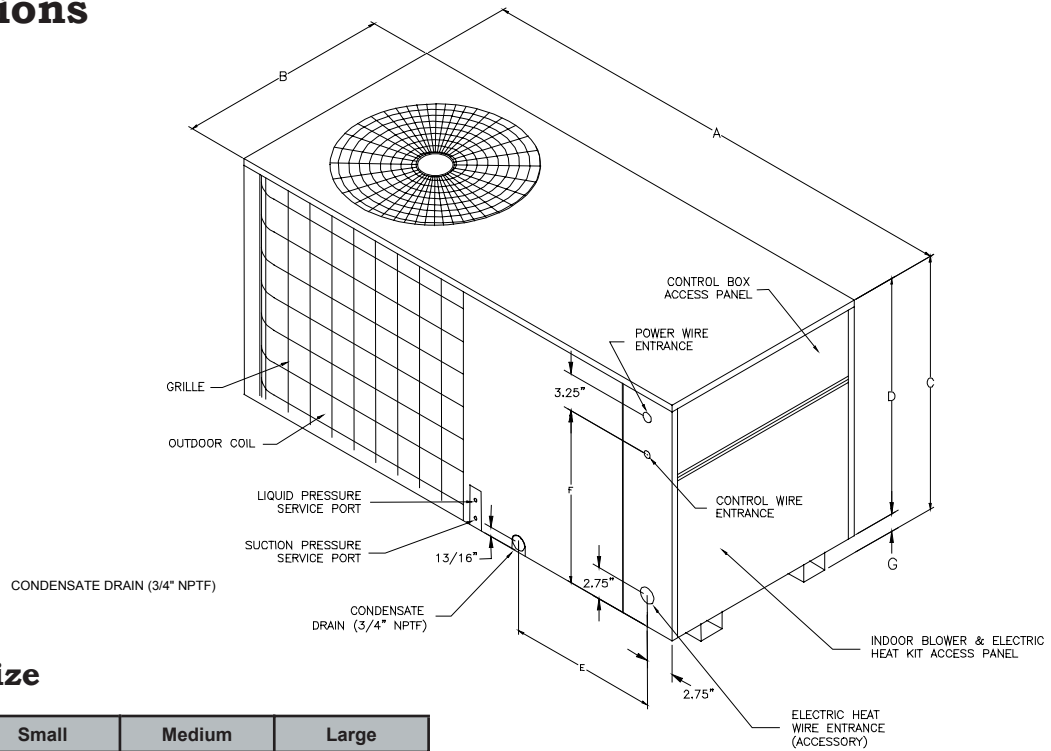
(1) Certified per ARI 210

(2) BTU/Watt @ 80/67 °F inside - 95 °F outside air

Note - May use fuses or HACR type circuit breakers of the same size as noted.

# PRODUCT SPECIFICATIONS

## Dimensions

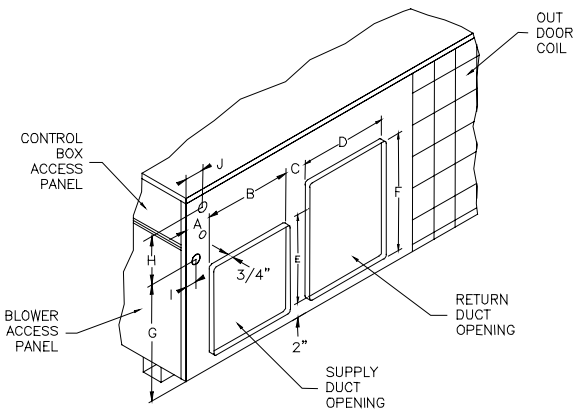


### Chassis Size

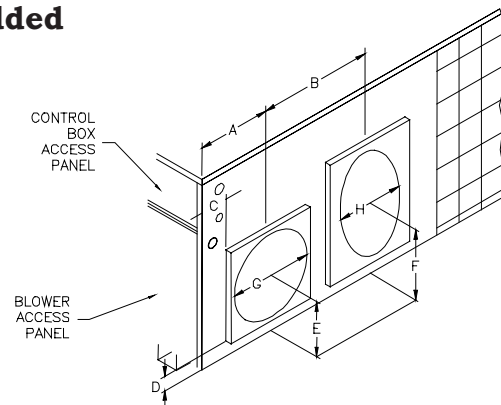
Model	Small	Medium	Large
PCKJ024-1F	X		
PCKJ030-1F	X		
PCKJ036-1F		X	
PCKJ042-1F		X	
PCKJ048-1F			X
PCKJ060-1F			X

Chassis	A	B	C	D	E	F	G
Small	56.35"	24.14"	27.12"	25"	16.68"	19.56"	2.12"
Medium	63.15"	32.15"	29.62"	27.5"	19.56"	22.06"	2.12"
Large	63.15"	32.15"	34.62"	32.5"	19.56"	27.06"	2.12"

### Unit with Regular Duct Panel



### Unit with Circular Duct Panel Added



Chassis	A	B	C	D	E	F	G	H	I	J
Small	3.75"	12"	4.25"	12"	12"	20"	16.18"	6.62"	2.59"	2.59"
Medium	3.75"	14"	6.25"	14"	14"	22"	18.68"	6.62"	2.25"	2.75"
Large	3.75"	14"	6.25"	14"	14"	24"	18.68"	11.62"	2.25"	2.75"

Chassis	A	B	C	D	E	F	G	H*
Small	9.62"	16.24"	3.62"	2"	8"	12"	12"	14"
Medium	10.75"	20.25"	3.75"	2"	9"	13"	14"	16"
Large	10.75"	20.25"	3.75"	2"	9"	15"	14"	18"

\* Return opening is equivalent to round duct stated

# PRODUCT SPECIFICATIONS

## Expanded Ratings—Cooling

### PCKJ024-1F

Indoor Air		Condenser Air Temperature														
		75F			85F			95F			105F			115F		
SCFM	WB	Total BTUH	Sens BTUH	Watts kWh	Total BTUH	Sens BTUH	Watts kWh	Total BTUH	Sens BTUH	Watts kWh	Total BTUH	Sens BTUH	Watts kWh	Total BTUH	Sens BTUH	Watts kWh
680	72	27.8	13.1	2.05	26.6	12.6	2.16	25.2	12.1	2.25	23.8	11.6	2.36	22.3	11.0	2.47
	67	25.4	16.3	1.92	24.2	15.8	2.01	23.0	15.2	2.12	21.6	14.7	2.23	20.2	14.7	2.33
	62	23.5	19.3	1.79	22.3	18.7	1.90	21.7	18.2	2.01	21.1	17.7	2.12	19.9	17.0	2.20
	57	22.6	20.8	1.75	21.6	20.0	1.85	20.6	19.1	1.96	19.4	18.0	2.09	18.5	17.0	2.18
800	72	29.0	14.5	2.12	27.6	14.0	2.20	26.2	13.5	2.31	24.7	13.1	2.42	23.0	12.4	2.53
	67	26.6	18.6	1.99	25.4	18.0	2.07	24.0	17.5	2.18	22.6	17.0	2.29	21.1	16.5	2.40
	62	24.7	22.2	1.88	23.5	21.5	1.96	22.3	20.7	2.07	21.4	19.6	2.18	20.2	18.6	2.31
	57	24.5	22.6	1.85	23.3	21.7	1.96	22.3	20.7	2.07	21.4	19.6	2.18	20.2	18.6	2.31
920	72	29.8	15.8	2.16	28.3	15.2	2.25	26.9	14.7	2.36	25.2	14.2	2.47	23.8	13.8	2.57
	67	27.6	20.5	2.03	26.2	20.1	2.12	24.7	19.6	2.23	23.3	18.9	2.33	21.8	18.4	2.44
	62	25.9	24.0	1.94	25.0	22.9	2.05	23.5	21.9	2.16	22.6	20.8	2.27	21.1	19.6	2.40
	57	25.9	24.0	1.94	25.0	22.9	2.05	23.5	21.9	2.16	22.6	20.8	2.27	21.1	19.6	2.40

Sensible heat capacities shown are based on 80F DB entering air at the evaporator coil. For sensible heat capacities at other than 80F DB, deduct 84 BTUH per 100 CFM of evaporator coil air for each degree below 80F, or add 84 BTUH per 100 CFM of evaporator coil air per degree above 80F.

CAPACITIES AT 95F OUTDOOR., 75F DB AND 63F WB INDOOR

TOTAL MBTUH 22.7      SENSIBLE MBTUH 16.7      LATENT MBTUH 6.0

### PCKJ030-1F

Indoor Air		Condenser Air Temperature														
		75F			85F			95F			105F			115F		
SCFM	WB	Total BTUH	Sens BTUH	Watts kWh	Total BTUH	Sens BTUH	Watts kWh	Total BTUH	Sens BTUH	Watts kWh	Total BTUH	Sens BTUH	Watts kWh	Total BTUH	Sens BTUH	Watts kWh
822	72	33.6	16.8	2.48	32.2	16.1	2.61	30.5	15.5	2.72	28.7	14.8	2.85	27.0	14.1	2.98
	67	30.7	20.8	2.32	29.3	20.2	2.43	27.8	19.5	2.56	26.1	18.8	2.69	24.4	18.8	2.82
	62	28.4	24.6	2.16	27.0	24.0	2.29	26.2	23.3	2.43	25.5	22.6	2.56	24.1	21.7	2.66
	57	27.3	26.7	2.11	26.1	25.5	2.24	24.9	24.4	2.37	23.5	23.1	2.53	22.3	21.7	2.64
967	72	35.1	18.6	2.56	33.4	17.9	2.66	31.6	17.2	2.79	29.9	16.8	2.93	27.8	15.9	3.06
	67	32.2	23.7	2.40	30.7	23.1	2.50	29.0	22.4	2.64	27.3	21.7	2.77	25.5	21.1	2.90
	62	29.9	28.4	2.27	28.4	27.6	2.37	27.0	26.4	2.50	25.8	25.1	2.64	24.4	23.7	2.79
	57	29.6	28.9	2.24	28.1	27.8	2.37	27.0	26.4	2.50	25.8	25.1	2.64	24.4	23.7	2.79
1112	72	36.0	20.2	2.61	34.2	19.5	2.72	32.5	18.8	2.85	30.5	18.1	2.98	28.7	17.7	3.11
	67	33.4	26.2	2.45	31.6	25.8	2.56	29.9	25.1	2.69	28.1	24.2	2.82	26.4	23.5	2.95
	62	31.3	30.7	2.35	30.2	29.3	2.48	28.4	28.0	2.61	27.3	26.7	2.74	25.5	25.1	2.90
	57	31.3	30.7	2.35	30.2	29.3	2.48	28.4	28.0	2.61	27.3	26.7	2.74	25.5	25.1	2.90

Sensible heat capacities shown are based on 80F DB entering air at the evaporator coil. For sensible heat capacities at other than 80F DB, deduct 84 BTUH per 100 CFM of evaporator coil air for each degree below 80F, or add 84 BTUH per 100 CFM of evaporator coil air per degree above 80F.

CAPACITIES AT 95F OUTDOOR., 75F DB AND 63F WB INDOOR

TOTAL MBTUH 27.4      SENSIBLE MBTUH 21.6      LATENT MBTUH 5.8

# PRODUCT SPECIFICATIONS

## Expanded Ratings—Cooling (cont.)

### PCKJ036-1F

Indoor Air		Condenser Air Temperature														
		75F			85F			95F			105F			115F		
SCFM	WB	Total BTUH	Sens BTUH	Watts kWh	Total BTUH	Sens BTUH	Watts kWh	Total BTUH	Sens BTUH	Watts kWh	Total BTUH	Sens BTUH	Watts kWh	Total BTUH	Sens BTUH	Watts kWh
1020	72	41.8	19.7	3.08	40.0	18.9	3.24	37.8	18.1	3.37	35.6	17.4	3.53	33.5	16.6	3.70
	67	38.2	24.5	2.88	36.4	23.7	3.01	34.6	22.9	3.17	32.4	22.1	3.34	30.2	22.1	3.50
	62	35.3	28.9	2.68	33.5	28.1	2.85	32.6	27.4	3.01	31.7	26.6	3.17	29.9	25.5	3.31
	57	33.8	31.3	2.62	32.4	30.0	2.78	31.0	28.7	2.95	29.2	27.1	3.14	27.7	25.5	3.27
1200	72	43.6	21.8	3.17	41.4	21.0	3.31	39.2	20.3	3.47	37.1	19.7	3.63	34.6	18.7	3.80
	67	40.0	27.9	2.98	38.2	27.1	3.11	36.0	26.3	3.27	33.8	25.5	3.44	31.7	24.7	3.60
	62	37.1	33.4	2.81	35.3	32.3	2.95	33.5	31.0	3.11	32.0	29.5	3.27	30.2	27.9	3.47
	57	36.7	33.9	2.78	34.9	32.6	2.95	33.5	31.0	3.11	32.0	29.5	3.27	30.2	27.9	3.47
1380	72	44.6	23.7	3.24	42.5	22.9	3.37	40.3	22.1	3.53	37.8	21.3	3.70	35.6	20.8	3.86
	67	41.4	30.8	3.04	39.2	30.2	3.17	37.1	29.5	3.34	34.9	28.4	3.50	32.8	27.6	3.67
	62	38.9	36.0	2.91	37.4	34.5	3.08	35.3	32.9	3.24	33.8	31.3	3.40	31.7	29.5	3.60
	57	38.9	36.0	2.91	37.4	34.5	3.08	35.3	32.9	3.24	33.8	31.3	3.40	31.7	29.5	3.60

Sensible heat capacities shown are based on 80F DB entering air at the evaporator coil. For sensible heat capacities at other than 80F DB, deduct 84 BTUH per 100 CFM of evaporator coil air for each degree below 80F, or add 84 BTUH per 100 CFM of evaporator coil air per degree above 80F.

CAPACITIES AT 95F OUTDOOR., 75F DB AND 63F WB INDOOR

TOTAL MBTUH 34.0      SENSIBLE MBTUH 25.0      LATENT MBTUH 8.9

### PCKJ042-1F

Indoor Air		Condenser Air Temperature														
		75F			85F			95F			105F			115F		
SCFM	WB	Total BTUH	Sens BTUH	Watts kWh	Total BTUH	Sens BTUH	Watts kWh	Total BTUH	Sens BTUH	Watts kWh	Total BTUH	Sens BTUH	Watts kWh	Total BTUH	Sens BTUH	Watts kWh
1139	72	46.6	22.1	3.44	44.6	21.2	3.62	42.2	20.3	3.76	39.8	19.4	3.95	37.4	18.5	4.13
	67	42.6	27.3	3.22	40.6	26.5	3.36	38.6	25.6	3.54	36.2	24.7	3.73	33.8	24.7	3.91
	62	39.4	32.3	3.00	37.4	31.5	3.18	36.4	30.6	3.36	35.4	29.7	3.54	33.4	28.5	3.69
	57	37.8	35.0	2.92	36.2	33.5	3.11	34.6	32.0	3.29	32.6	30.3	3.51	31.0	28.5	3.65
1340	72	48.6	24.4	3.54	46.2	23.5	3.69	43.8	22.6	3.87	41.4	22.1	4.06	38.6	20.9	4.24
	67	44.6	31.2	3.33	42.6	30.3	3.47	40.2	29.4	3.65	37.8	28.5	3.84	35.4	27.6	4.02
	62	41.4	37.3	3.14	39.4	36.2	3.29	37.4	34.7	3.47	35.8	32.9	3.65	33.8	31.2	3.87
	57	41.0	37.9	3.11	39.0	36.5	3.29	37.4	34.7	3.47	35.8	32.9	3.65	33.8	31.2	3.87
1541	72	49.8	26.5	3.62	47.4	25.6	3.76	45.0	24.7	3.95	42.2	23.8	4.13	39.8	23.2	4.31
	67	46.2	34.4	3.40	43.8	33.8	3.54	41.4	32.9	3.73	39.0	31.8	3.91	36.6	30.9	4.09
	62	43.4	40.3	3.25	41.8	38.5	3.44	39.4	36.8	3.62	37.8	35.0	3.80	35.4	32.9	4.02
	57	43.4	40.3	3.25	41.8	38.5	3.44	39.4	36.8	3.62	37.8	35.0	3.80	35.4	32.9	4.02

Sensible heat capacities shown are based on 80F DB entering air at the evaporator coil.

For sensible heat capacities at other than 80F DB, deduct 84 BTUH per 100 CFM of evaporator coil air for each degree below 80F, or add 84 BTUH per 100 CFM of evaporator coil air per degree above 80F.

CAPACITIES AT 95F OUTDOOR., 75F DB AND 63F WB INDOOR

TOTAL MBTUH 37.9      SENSIBLE MBTUH 28.0      LATENT MBTUH 9.9

# PRODUCT SPECIFICATIONS

## Expanded Ratings—Cooling (cont.)

### PCKJ048-1F

Indoor Air		Condenser Air Temperature														
		75F			85F			95F			105F			115F		
SCFM	WB	Total BTUH	Sens BTUH	Watts kWh	Total BTUH	Sens BTUH	Watts kWh	Total BTUH	Sens BTUH	Watts kWh	Total BTUH	Sens BTUH	Watts kWh	Total BTUH	Sens BTUH	Watts kWh
1303	72	53.4	25.9	3.93	51.1	24.8	4.14	48.3	23.8	4.31	45.5	22.8	4.52	42.8	21.7	4.73
	67	48.8	32.1	3.68	46.5	31.1	3.85	44.2	30.0	4.06	41.4	29.0	4.27	38.6	29.0	4.47
	62	45.1	38.0	3.43	42.8	36.9	3.64	41.6	35.9	3.85	40.5	34.8	4.06	38.2	33.5	4.22
	57	43.2	41.1	3.35	41.4	39.3	3.55	39.6	37.6	3.76	37.3	35.5	4.01	35.4	33.5	4.18
1533	72	55.7	28.6	4.06	52.9	27.6	4.22	50.1	26.6	4.43	47.4	25.9	4.64	44.2	24.5	4.85
	67	51.1	36.6	3.81	48.8	35.5	3.97	46.0	34.5	4.18	43.2	33.5	4.39	40.5	32.4	4.60
	62	47.4	43.8	3.60	45.1	42.4	3.76	42.8	40.7	3.97	40.9	38.6	4.18	38.6	36.6	4.43
	57	46.9	44.5	3.55	44.6	42.8	3.76	42.8	40.7	3.97	40.9	38.6	4.18	38.6	36.6	4.43
1763	72	57.0	31.1	4.14	54.3	30.0	4.31	51.5	29.0	4.52	48.3	27.9	4.73	45.5	27.3	4.93
	67	52.9	40.4	3.89	50.1	39.7	4.06	47.4	38.6	4.27	44.6	37.3	4.47	41.9	36.2	4.68
	62	49.7	47.3	3.72	47.8	45.2	3.93	45.1	43.1	4.14	43.2	41.1	4.35	40.5	38.6	4.60
	57	49.7	47.3	3.72	47.8	45.2	3.93	45.1	43.1	4.14	43.2	41.1	4.35	40.5	38.6	4.60

Sensible heat capacities shown are based on 80F DB entering air at the evaporator coil.

For sensible heat capacities at other than 80F DB, deduct 84 BTUH per 100 CFM of evaporator coil air for each degree below 80F, or add 84 BTUH per 100 CFM of evaporator coil air per degree above 80F.

CAPACITIES AT 95F OUTDOOR., 75F DB AND 63F WB INDOOR

TOTAL MBTUH 43.4      SENSIBLE MBTUH 33.0      LATENT MBTUH 10.4

### PCKJ060-1F

Indoor Air		Condenser Air Temperature														
		75F			85F			95F			105F			115F		
SCFM	WB	Total BTUH	Sens BTUH	Watts kWh	Total BTUH	Sens BTUH	Watts kWh	Total BTUH	Sens BTUH	Watts kWh	Total BTUH	Sens BTUH	Watts kWh	Total BTUH	Sens BTUH	Watts kWh
1587	72	65.0	31.1	4.79	62.2	29.8	5.04	58.8	28.6	5.24	55.4	27.3	5.50	52.1	26.1	5.75
	67	59.4	38.5	4.48	56.6	37.3	4.68	53.8	36.0	4.94	50.4	34.8	5.19	47.0	34.8	5.45
	62	54.9	45.5	4.17	52.1	44.3	4.43	50.7	43.1	4.68	49.3	41.8	4.94	46.5	40.2	5.14
	57	52.6	49.3	4.07	50.4	47.2	4.33	48.2	45.1	4.58	45.4	42.6	4.89	43.1	40.2	5.09
1867	72	67.8	34.4	4.94	64.4	33.1	5.14	61.0	31.9	5.40	57.7	31.1	5.65	53.8	29.4	5.91
	67	62.2	43.9	4.63	59.4	42.6	4.84	56.0	41.4	5.09	52.6	40.2	5.35	49.3	38.9	5.60
	62	57.7	52.6	4.38	54.9	50.9	4.58	52.1	48.9	4.84	49.8	46.4	5.09	47.0	43.9	5.40
	57	57.1	53.4	4.33	54.3	51.3	4.58	52.1	48.9	4.84	49.8	46.4	5.09	47.0	43.9	5.40
2147	72	69.4	37.3	5.04	66.1	36.0	5.24	62.7	34.8	5.50	58.8	33.5	5.75	55.4	32.7	6.01
	67	64.4	48.4	4.73	61.0	47.6	4.94	57.7	46.4	5.19	54.3	44.7	5.45	51.0	43.5	5.70
	62	60.5	56.7	4.53	58.2	54.2	4.79	54.9	51.8	5.04	52.6	49.3	5.29	49.3	46.4	5.60
	57	60.5	56.7	4.53	58.2	54.2	4.79	54.9	51.8	5.04	52.6	49.3	5.29	49.3	46.4	5.60

Sensible heat capacities shown are based on 80F DB entering air at the evaporator coil.

For sensible heat capacities at other than 80F DB, deduct 84 BTUH per 100 CFM of evaporator coil air for each degree below 80F, or add 84 BTUH per 100 CFM of evaporator coil air per degree above 80F.

CAPACITIES AT 95F OUTDOOR., 75F DB AND 63F WB INDOOR

TOTAL MBTUH 52.9      SENSIBLE MBTUH 39.5      LATENT MBTUH 13.3

# PRODUCT SPECIFICATIONS

## Evaporator Blower Specifications

Model	Speed	Volts		External Static Pressure (inches water)									
				0.1	0.2	0.3	0.4	0.5	0.6	0.7	0.8	0.9	1.0
PCKJ024-1F	LOW	230	CFM WATTS	640 160	625 150	- -	- -	- -	- -	- -	- -	- -	- -
		208	CFM WATTS	615 140	600 130	- -	- -	- -	- -	- -	- -	- -	- -
	MED	230	CFM WATTS	875 230	850 225	810 215	790 205	735 195	705 185	- -	- -	- -	- -
		208	CFM WATTS	850 220	830 200	785 190	765 185	705 180	- -	- -	- -	- -	- -
	HIGH	230	CFM WATTS	1,135 360	1,125 350	1,085 335	1,035 320	955 305	920 285	880 255	830 230	- -	- -
		208	CFM WATTS	1,110 330	1,105 320	1,060 305	1,010 295	930 280	895 260	845 230	785 205	- -	- -
PCKJ030-1F	LOW	230	CFM WATTS	1,100 315	1,070 305	1,025 295	965 285	905 270	820 250	720 235	- -	- -	- -
		208	CFM WATTS	1,060 350	1,030 280	1,005 250	895 245	850 235	760 225	- -	- -	- -	- -
	MED	230	CFM WATTS	1,225 380	1,215 375	1,160 355	1,085 345	1,020 330	935 305	805 285	- -	- -	- -
		208	CFM WATTS	1,200 350	1,195 335	1,135 330	1,060 325	995 295	910 280	770 260	- -	- -	- -
	HIGH	230	CFM WATTS	1,295 430	1,285 425	1,225 410	1,150 395	1,085 385	985 370	875 350	735 325	- -	- -
		208	CFM WATTS	1,260 400	1,265 395	1,200 380	1,125 370	1,060 360	960 345	840 325	690 300	- -	- -
PCKJ036-1F	LOW	230	CFM WATTS	1,455 480	1,415 470	1,350 460	1,290 440	1,225 420	1,165 380	1,090 355	1,045 320	- -	- -
		208	CFM WATTS	1,380 450	1,345 445	1,285 435	1,225 415	1,160 395	1,090 355	1,045 315	975 300	- -	- -
	HIGH	230	CFM WATTS	1,725 550	1,630 520	1,590 510	1,560 500	1,520 480	1,400 430	1,315 410	1,245 390	1,185 375	- -
		208	CFM WATTS	1,640 525	1,550 495	1,515 485	1,485 475	1,445 455	1,330 410	1,250 380	1,125 385	1,065 360	- -
PCKJ042-1F	LOW	230	CFM WATTS	1,455 480	1,415 470	1,350 460	1,290 440	1,225 420	- -	- -	- -	- -	- -
		208	CFM WATTS	1,380 450	1,345 445	1,285 435	1,225 415	- -	- -	- -	- -	- -	- -
	HIGH	230	CFM WATTS	1,725 550	1,630 520	1,590 510	1,560 500	1,520 480	1,400 430	1,315 410	- -	- -	- -
		208	CFM WATTS	1,640 525	1,550 495	1,515 485	1,485 475	1,445 455	1,330 410	1,250 380	- -	- -	- -
PCKJ048-1F	LOW	230	CFM WATTS	1,730 690	1,685 670	1,635 640	1,580 600	1,490 565	- -	- -	- -	- -	- -
		208	CFM WATTS	1,610 665	1,600 650	1,580 625	1,490 565	- -	- -	- -	- -	- -	- -
	HIGH	230	CFM WATTS	1,990 840	1,960 810	1,880 765	1,795 710	1,695 670	1,595 635	- -	- -	- -	- -
		208	CFM WATTS	1,895 790	1,865 770	1,790 730	1,710 680	1,615 640	1,520 605	- -	- -	- -	- -
PCKJ060-1F	LOW	230	CFM WATTS	2,160 910	2,125 865	2,085 830	2,025 800	1,970 765	- -	- -	- -	- -	- -
		208	CFM WATTS	2,055 820	2,010 780	1,985 755	1,890 740	1,870 730	- -	- -	- -	- -	- -
	HIGH	230	CFM WATTS	2,540 1,115	2,470 1,070	2,310 1,020	2,280 985	2,220 945	2,095 895	- -	- -	- -	- -
		208	CFM WATTS	2,425 1,055	2,350 1,020	2,200 985	2,150 935	2,120 905	1,995 855	- -	- -	- -	- -

**NOTES:**

1. Data shown is dry coil. Wet coil pressure drop is approximately 0.1" H<sub>2</sub>O, for 2 row indoor coil; 0.2" H<sub>2</sub>O, for 3 row indoor coil; and 0.3" H<sub>2</sub>O, for 4 row indoor coil.
2. Data shown does not include filter pressure drop, approx. 0.08" H<sub>2</sub>O.
3. ALL MODELS SHOULD RUN NO LESS THAN 350 CFM/TON, USE HIGHER SPEED TAP OR NEXT SIZE LARGER BLOWER ASM., SEE REPAIR PARTS LIST.

# PRODUCT SPECIFICATIONS

## Heat Kit Selection

Model	PCKJ024-1F	PCKJ030-1F	PCKJ036-1F	PCKJ042-1F	PCKJ048-1F	PCKJ060-1F
HK05-1	√	√	√	√	√	√
HK08-1	√	√	√	√	√	√
HK10-*	√	√	√	√	√	√
HK15-*		√	√	√	√	√
HK20-*			√	√	√	√

\* 1, 3 or 4 Electrical Designator.

NOTE: See SS-311D (HKR Spec Sheet) for further information about Heat Kits

## Heat Kit Electrical Data

Model	Nominal kW	Heater Ampacity 208/240V	Minimum Ampacity 208/240V	Maximum Overcurrent Protection 208/240V	Multiple Supply Circuit			
					Minimum Ampacity per Circuit @ 208/240V		Maximum Overcurrent Protection @ 208/240V	
					1	2	1	2
HK05-1*	4.75	17.2/19.8	22/25	30/30				
HK08-1*	7.00	25.3/29.2	32/37	60/60				
HK10-1*	9.50	34.4/39.6	43/50	60/60				
HK10-3	9.50	20.7/23.6	26/30	30/30				
HK15-1*	14.25	51.5/59.4	65/75	90/90	22/25	43/50	30/30	60/60
HK15-3	15.0	31.7/36.2	40/46	50/50				
HK15-4#	15.0	18.1	23	30				
HK20-1*	19.0	68.7/79.2	86/99	120/120	43/50	43/50	60/60	60/60
HK20-3	19.6	41.4/47.2	52/59	60/60				
HK20-4#	19.6	23.6	30	30				

\* Circuit Breaker Models

# Ratings at 480 VAC, Phase 3

NOTE: Ratings are at 208/240 VAC, except where noted

## Accessories

Model	LPAK-00A	LPAK-01A	LPAK-02A	LPAK-03A
PCKJ024-1F	X			
PCKJ030-1F	X			
PCKJ036-1F		X		
PCKJ042-1F		X		
PCKJ048-1F			X	
PCKJ060-1F				X

## kW Correction Factor

Supply Voltage	240	230	220	210	208
Correction Factor	1.00	0.93	0.85	0.78	0.76

Multiply the 240 VAC capacity by factors



Goodman Manufacturing Co., L.P., reserves the right to discontinue, or change at any time, specifications or designs without notice or without incurring obligations.

Copyright © 2005 Goodman Manufacturing Co, L.P. • Houston, Texas  
Goodman® brand products are made proudly in the USA. Printed in the USA.